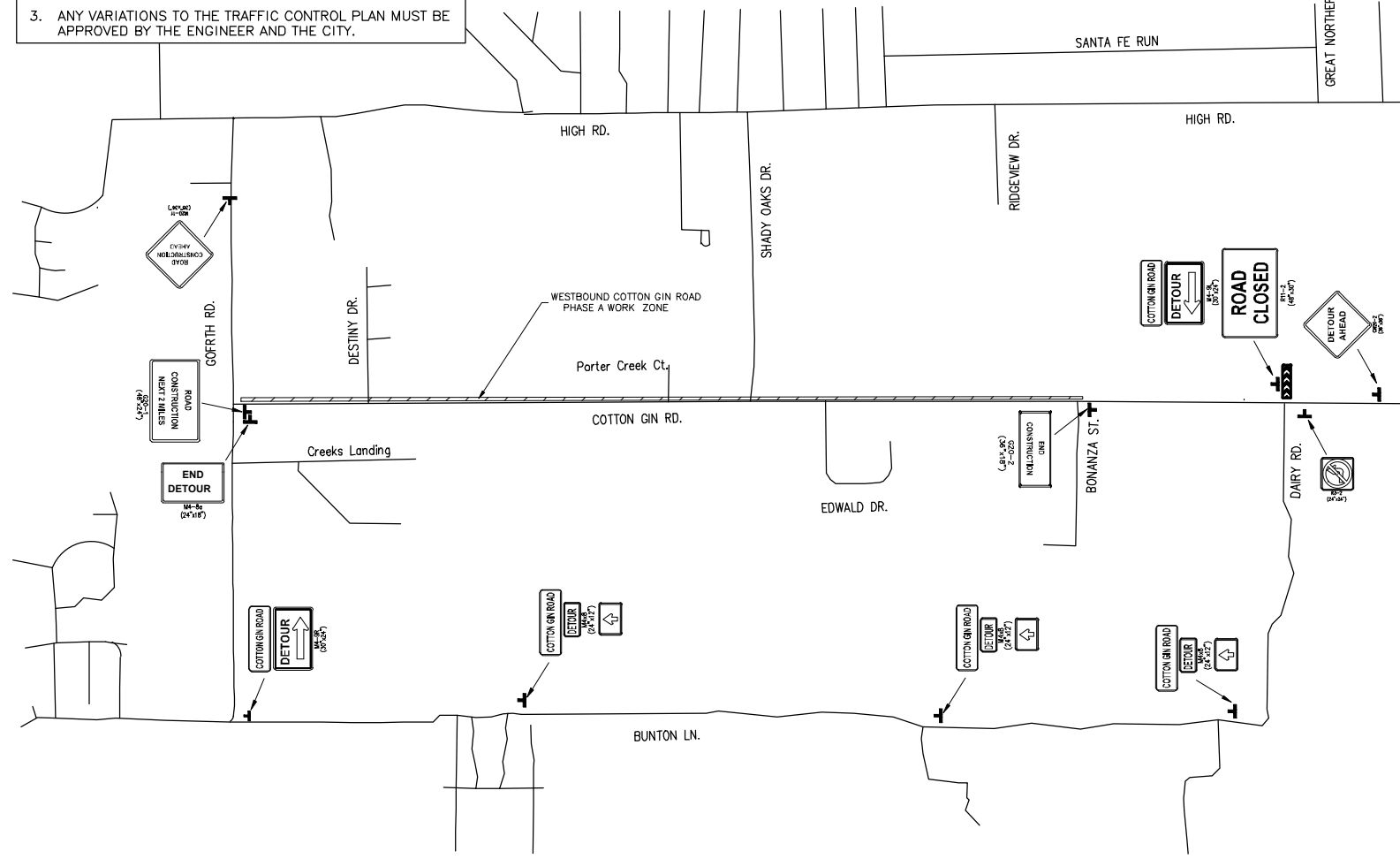
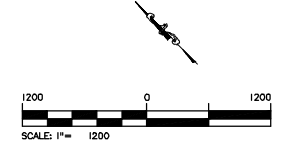


**NOTE**

1. PLACE ADVANCE WARNING SIGNS AS SHOWN IN THE PLANS UTILIZING THE TEXAS MUTCD AND TXDOT BC (1-12)-14 STANDARDS.
2. ALL TRAFFIC CONTROL SIGNS SHALL BE IN ACCORDANCE WITH THE LATEST EDITION OF THE TEXAS MANUAL ON UNIFORM TRAFFIC CONTROL DEVICES (TEXAS MUTCD).
3. ANY VARIATIONS TO THE TRAFFIC CONTROL PLAN MUST BE APPROVED BY THE ENGINEER AND THE CITY.



NO.	DESCRIPTION	DATE

**COTTON GIN ROAD  
 PHASE I  
 OVERALL TRAFFIC  
 CONTROL PLAN  
 PHASE A**

SHEET 1 OF 1

CONT.	SECT.	JOB	HIGHWAY NO.
C	S	J	CR149
STATE	DIST.	COUNTY	SHEET NO.
TEXAS	AUS	HAYS	13