

Standard Fire Hydrant

Hays County
Fire Marshal's Office

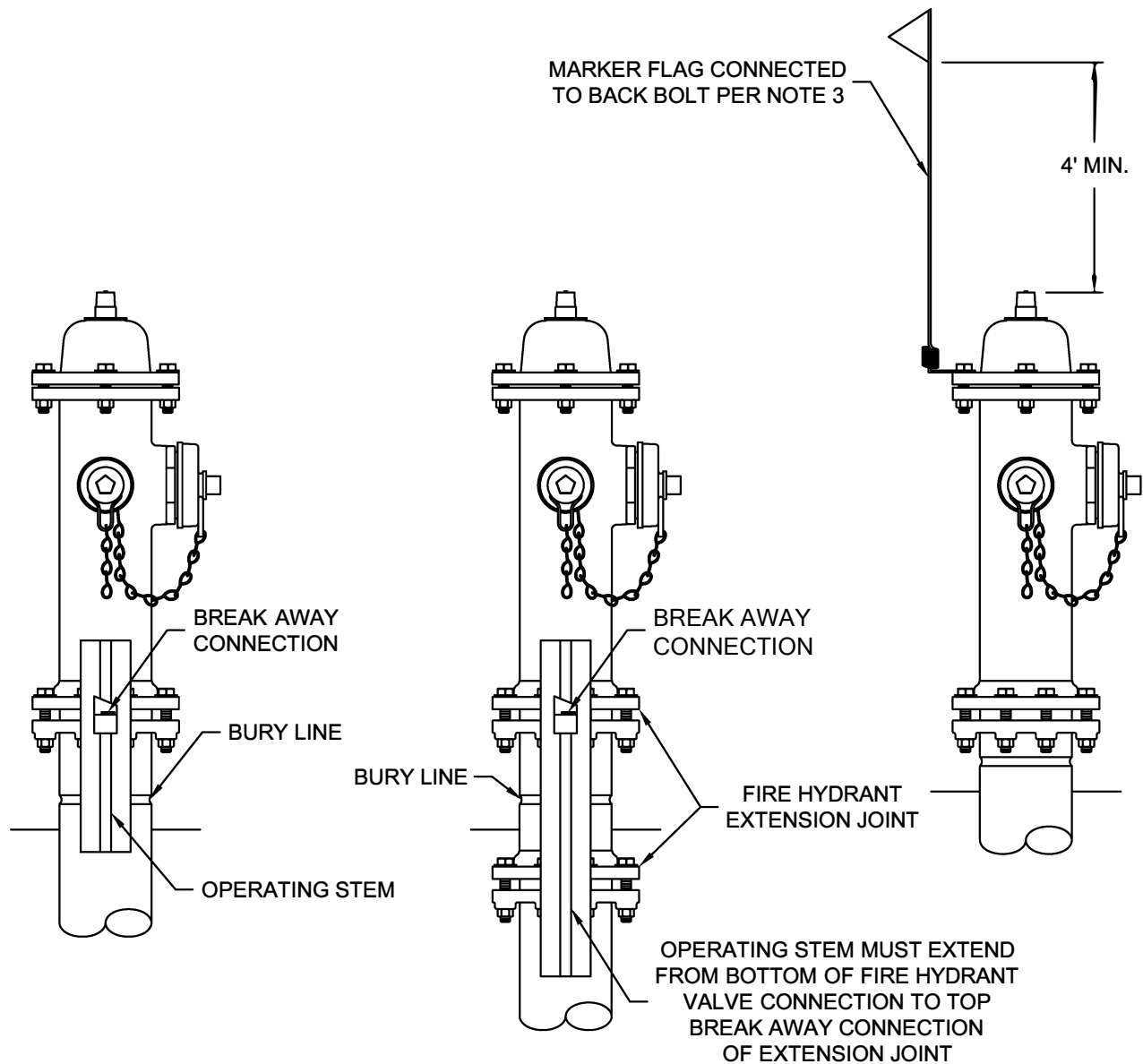
THE ARCHITECT/ENGINEER ASSUMES
RESPONSIBILITY FOR APPROPRIATE USE
OF THIS STANDARD.

511-17-HC

1 OF 2

N.T.S.

STANDARD DETAIL



NOTES:

1. PUBLIC HYDRANTS SHALL BE FACTORY PAINTED WITH BRIGHT ALUMINUM BASED SILVER PAINT AND PRIVATE HYDRANTS SHALL BE PAINTED RED.
2. A BLUE REFLECTIVE PAVEMENT MARKER MUST BE PLACED WITH EVERY FIRE HYDRANT ADJACENT TO A PAVED ROADWAY 6"-10" OFF CENTER LINE OF ROAD ON FIRE HYDRANT SIDE.
3. FIRE HYDRANTS OUTSIDE ROW SHALL HAVE MARKING FLAGS IN RURAL AREAS. (SEE PAGE 2)
4. FIRE HYDRANT MUST GO ON PAVEMENT SIDE OF FENCE, OR FENCE MUST BE REBUILT AROUND FIRE HYDRANT TO ALLOW ACCESS FROM PAVEMENT TO FIRE HYDRANT.
5. FIRE HYDRANT MAY ONLY MINIMALLY OBSTRUCT SIDEWALK AT EITHER EDGE
6. NO OBJECT THAT WILL OBSTRUCT MAINTENANCE OR USE OF THE FIRE HYDRANT WILL BE LOCATED WITH IN 3 FEET OF THE FIRE HYDRANT INCLUDING BUT NOT LIMITED TO (TREES, FENCES, TELEPHONE POLE, DUMPSTER, PERMANENT/NON-PERMANENT STRUCTURES,...ETC.).
7. WRAP ALL UNDERGROUND PIPING FROM MAIN TO BURY LINE IN 8 MIL POLY. CUT WRAP AT WEEP HOLES TO ALLOW HYDRANT TO DRAIN.
8. WHERE FIRE HYDRANTS ARE SUBJECT TO IMPACT BY A MOTOR VEHICLE, GUARD POSTS SHALL BE INSTALLED IN ACCORDANCE WITH SECTION 312 OF THE INTERNATIONAL FIRE CODE.

Standard Fire Hydrant

Hays County
Fire Marshal's Office

THE ARCHITECT/ENGINEER ASSUMES
RESPONSIBILITY FOR APPROPRIATE USE
OF THIS STANDARD.

511-17-HC

2 OF 2
N.T.S. STANDARD DETAIL