



Hays County Candidate Projects

PROPOSED ROAD BOND PROGRAM WORKSESSION

July 19, 2016



Candidate Projects

- Identified by Commissioners
- Complete projects currently in the planning process
- Priority projects in Hays County Long Range Transportation Plan
- Project scope ranges from planning and right of way preservation to full design and construction

July 19, 2016

2

Types of Projects

- Address congestion/mobility
- Improve regional connectivity
- Safety and operations
- Support economic development
- Corridor preservation
- Leverage TxDOT/local dollars

July 19, 2016

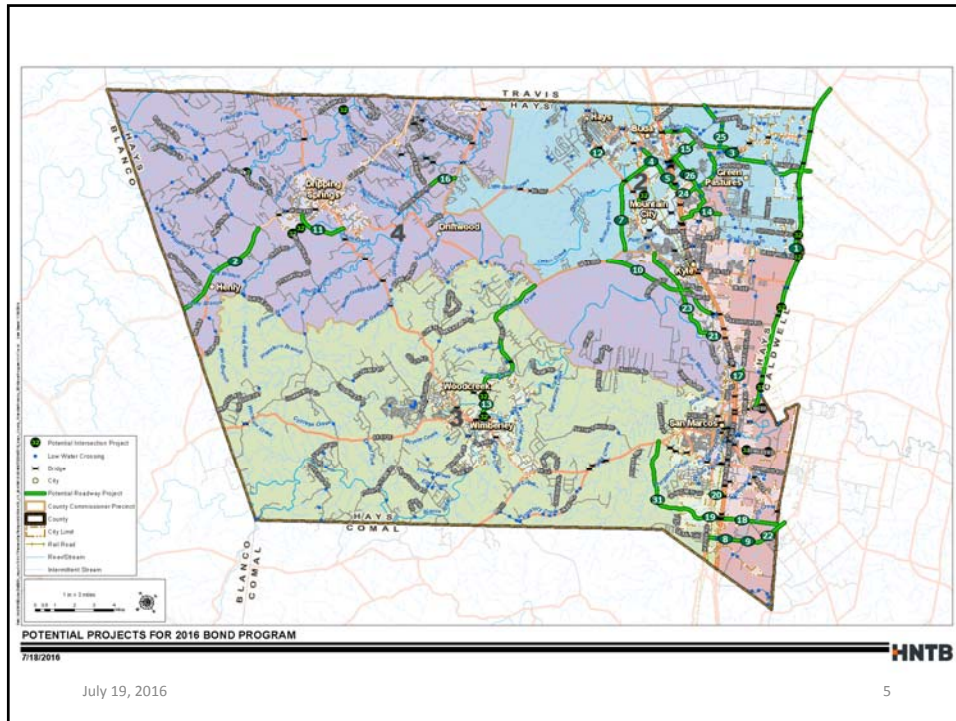
3

Cost Estimates

- Prepared by local engineering firms
- Current (2016) construction cost
- Right of way based on land values near project
- 15% miscellaneous construction
- 20% contingency
- 15% - 20% professional services
 - Design
 - Environmental
 - Legal
 - CEI
- All estimates reviewed for reasonableness by HNTB and HDR

July 19, 2016

4



Potential Projects List

HAYS COUNTY 2016 POTENTIAL ROAD BOND PROJECTS				
Project	Project Limits		Budget	
PRECINCT 1				
1	SH 21 Corridor	US 183 / SH 45	SH 80	\$ 24,600,000
2	SH 21 @ Bogie Rd/Arnold Ave	500' West	500' East	\$ 500,000
3	SH 21 @ FM 1966	500' West	500' East	\$ 800,000
4	Posey Road Expansion	CR 266	Hunter Road	\$ 19,700,000
5	Posey Road Extension	CR 266	SH 123	\$ 1,900,000
6	Harris Hill Extension	End	River Ridge Pkwy	\$ 30,600,000
7	Centerpoint Road Reconstruction	Old Bastrop Road	County Line	\$ 16,600,000
8	SH 80 @ Military	500' North of Military	500' South of Military	\$ 1,000,000
9	FM 621 @ River Hills Dr	500' North	500' South	\$ 1,700,000
10	FM 621 @ Crystal River	500' North	500' South	\$ 800,000
11	Beback Inn Road	Centerpoint Road	SH 123	\$ 6,200,000
12	Beebee Road Safety Improvements & ROW	I-35	Goforth Road	\$ 3,100,000
			Precinct 1 Total	\$ 107,500,000

Potential Projects List

HAYS COUNTY 2016 POTENTIAL ROAD BOND PROJECTS				
Project	Project Limits		Budget	
PRECINCT 2				
1	FM 2001 Gap	East of White Wing Trail	West of Rhode Road	\$ 9,100,000
2	Robert S Light Ext / Buda Truck Bypass ROW	RM 967	FM 1626	\$ 6,200,000
3	Dacy Lane	Beebee Road	Hillside Terrace	\$ 36,500,000
4	RM 967	Railroad	I-35	\$ 11,600,000
5	SH 21 @ Grist Mill Rd	500' West	500' East	\$ 1,000,000
6	SH 21 @ Cotton Gin Rd	500' West	500' East	\$ 1,100,000
7	Kyle/Mountain City Loop	RM 150	FM 1626	\$ 12,000,000
8	RM 967 Safety Turn Lanes	West of FM 1626		\$ 5,900,000
10	Windy Hill Road	I-35	FM 2001	\$ 21,600,000
9	Hillside Terrace Safety Improvements & ROW	I-35	FM 2001	\$ 2,600,000
11	South Turnersville Road	County Line	FM 2001	\$ 1,400,000
12	FM 2770 @ Hays Youth Baseball/Softball/Soccer & 4H Barns	FM 1626	500' East of Hays Youth	\$ 1,800,000
13	Lois Lane	Dacy Lane	Marsh Lane	\$ 1,000,000
			Precinct 2 Total	\$ 111,800,000

July 19, 2016

7

Potential Projects List

HAYS COUNTY 2016 POTENTIAL ROAD BOND PROJECTS				
Project	Project Limits		Budget	
PRECINCT 3				
1	Centerpoint Road Extension	Hunter Road	RM 12	\$ 10,800,000
2	Centerpoint Road Expansion	I-35	Hunter Road	\$ 5,400,000
4	FM 3237 Safety Improvements	RM 12	RM 150	\$ 14,000,000
3	McCarty Expansion	I-35	Hunter Road	\$ 6,000,000
5	Winters Mill @ RM 3237	500' West	500' East	\$ 400,000
6	Winters Mill @ RM 12	500' North	500' South	\$ 600,000
			Precinct 3 Total	\$ 37,200,000
PRECINCT 4				
1	FM 150 West Realignment ROW & Utilities	FM 2770	I-35	\$ 11,800,000
2	FM 150 Far West Extension	RM 12	US 290	\$ 34,100,000
3	US 290 West Safety Improvements	McGregor Lane	County Line	\$ 4,000,000
4	Darden Hill Widening Turn Lanes	West of Sawyer Ranch	RM 1826	\$ 7,100,000
5	Old Stagecoach Road Widening	RM 150	Post Road	\$ 15,400,000
6	Post Road High Bridge			\$ 8,700,000
			Precinct 4 Total	\$ 81,100,000

July 19, 2016

8

Potential Projects List

HAYS COUNTY 2016 POTENTIAL ROAD BOND PROJECTS				
Project		Project Limits		Budget
PRECINCT 1				Precinct 1 Total \$ 107,500,000
PRECINCT 2				Precinct 2 Total \$ 111,800,000
PRECINCT 3				Precinct 3 Total \$ 37,200,000
PRECINCT 4				Precinct 4 Total \$ 81,100,000
COUNTY-WIDE BUCKETS				
1	Drainage / Low Water Crossings	Safety Improvements	County-wide	\$ 5,000,000
2	Environmental Mitigation	RHCP	County-wide	\$ 5,000,000
3	Non-Motorized Transportation	Hike & Bike	County-wide	\$ 5,000,000
TOTAL				\$ 352,600,000

July 19, 2016

9

Project Information

Precinct 1

July 19, 2016

10

<p>SH 21 Corridor <i>US 183/SH 45 to SH 80</i></p> <ul style="list-style-type: none"> • Plan 4-lane divided in Ultimate ROW • Planning • TxDOT ENV Clearance • ROW Preservation • \$24.6 M* 	<p>SH 21 Intersection Safety Improvements</p> <ul style="list-style-type: none"> • At Bogie Road/Arnold Ave <ul style="list-style-type: none"> • \$0.5 M • At FM 1966 <ul style="list-style-type: none"> • \$0.8 M
<p><small>*Costs are for identified tasks proposed for road bond program and do not necessarily indicate total project development and construction costs.</small></p>	
<p><small>July 19, 2016</small></p>	<p><small>11</small></p>

<p>Posey Road Expansion <i>CR 266 to Hunter Road</i></p> <ul style="list-style-type: none"> • Construct 4-lanes divided in Ultimate ROW • County ENV Clearance • Design • ROW Acquisition • Utility Relocation • Construction • \$19.7 M 	<p>Posey Road Extension <i>CR 266 to SH 123</i></p> <ul style="list-style-type: none"> • Plan 4-lane divided in Ultimate ROW • Planning • County ENV Clearance • ROW Preservation • \$1.9 M
<p><small>July 19, 2016</small></p>	<p><small>12</small></p>

<p>Harris Hill Extension To River Ridge Parkway</p> <ul style="list-style-type: none"> • Construct interim 2-lanes of 4-lane section in Ultimate ROW • County ENV Clearance • Design • ROW Acquisition • Utility Relocations • Construction • \$ 30.6 M 	<p>Centerpoint Road Reconstruction Old Bastrop Road to County Line</p> <ul style="list-style-type: none"> • Construct 4-lanes in Ultimate ROW • County ENV Clearance • Design • ROW Acquisition • Utility Relocations • Construction • \$16.6 M
<p>July 19, 2016</p>	<p>13</p>

<p>SH 80 Intersection Safety Improvements</p> <ul style="list-style-type: none"> • At Military <ul style="list-style-type: none"> • \$1.0 M <p>FM 621 Intersection Safety Improvements</p> <ul style="list-style-type: none"> • At River Hills <ul style="list-style-type: none"> • \$1.7 M • At Crystal River <ul style="list-style-type: none"> • \$0.8 M 	<p>Beback Inn Road Centerpoint Road to SH 123</p> <ul style="list-style-type: none"> • Add 8' shoulders and overlay in Ultimate ROW • County ENV Clearance • Design • ROW Acquisition • Utility Relocations • Construction • \$6.2 M
<p>July 19, 2016</p>	<p>14</p>

**Beebe Road Safety & ROW
I-35 to Goforth Road**

- Plan 3-lanes in Ultimate ROW with interim improvements
- Planning
- County ENV Clearance
- ROW Preservation
- Safety Design
- Utility Relocations
- Construct Safety Impr.
- \$3.1 M

July 19, 2016

15

Project Information

Precinct 2

July 19, 2016

16

<p>FM 2001 Gap <i>East of White Wing to West of Rhode Road</i></p> <ul style="list-style-type: none"> • Design 4-lane divided in Ultimate ROW • Design • ROW Acquisition • Utility Relocations • \$9.0 M 	<p>Buda Truck Bypass / Robert S. Light ROW <i>RM 967 to FM 1626</i></p> <ul style="list-style-type: none"> • ROW (if not donated) • \$6.0 M
---	---

July 19, 2016 17

<p>Dacy Lane <i>Bebee Rd to Hillside Terrace</i></p> <ul style="list-style-type: none"> • Construct 3-lanes in Ultimate ROW • Design • ROW Acquisition • Utility Relocations • Construction • \$36.5 M 	<p>RM 967 <i>Railroad to I-35</i></p> <ul style="list-style-type: none"> • Construct 3-lanes in Ultimate ROW • TxDOT ENV Clearance • Design • ROW Acquisition • Utility Relocations • Construction • \$11.6 M
--	--

July 19, 2016 18

SH 21 Intersection Safety Improvements

- At Gristmill
 - \$1.0 M
- At Cotton Gin
 - \$1.1 M

**Kyle/Mountain City Loop
*RM 150 to FM 1626***

- Plan 4-lane divided in Ultimate ROW
- Planning
- County ENV Clearance
- ROW Preservation
- \$12.0 M

July 19, 2016

19

**RM 967 Safety Turn Lanes
*West of FM 1626***

- TxDOT ENV Clearance
- Design
- ROW Acquisition
- Utility Relocations
- Construction
- \$5.9 M

**Windy Hill Road
*I-35 to FM 2001***

- Construct 3-lanes in Ultimate ROW
- County ENV Clearance
- Design
- ROW Acquisition
- Utility Relocations
- Construction
- \$21.6 M

July 19, 2016

20

**Hillside Terrace Safety
Improvements & ROW
I-35 to FM 2001**

- Plan 3-lanes in Ultimate ROW with interim improvements
- Planning
- County ENV Clearance
- ROW Preservation
- Safety Design
- Utility Relocations
- Construct Safety Impr.
- \$2.6 M

July 19, 2016

**South Turnersville Road
County Line to FM 2001**

- Plan 3-lanes in Ultimate ROW
- County ENV Clearance
- Design
- ROW Acquisition
- \$1.4 M

21

**FM 2770 Intersection Safety
Improvement Project**

- At Hays Youth Baseball/Softball /Soccer Complex and 4H Barns
 - \$1.8 M

July 19, 2016

**Lois Lane
Dacy Lane to Marsh Lane**

- Construct 2-lanes in new ROW
- County ENV Clearance
- Design
- ROW Acquisition
- Utility Relocations
- Construction
- \$1.0M

22

Project Information

Precinct 3

July 19, 2016

23

Centerpoint Road Extension *Hunter Road to RM 12*

- Plan 4-lanes in Ultimate ROW
- Planning
- County ENV Clearance
- ROW Preservation
- \$ 10.8 M

Centerpoint Road Expansion *I-35 to Hunter Road*

- Construct 4-lanes in Ultimate ROW
- County ENV Clearance
- ROW Acquisition
- Design
- Utility Relocations
- Construction
- \$5.4 M

July 19, 2016

24

FM 3237 Safety Improvements (Center & Right Turn Lanes) RM 12 to RM 150

- TxDOT ENV Clearance
- Design
- ROW Acquisition
- Utility Relocations
- Construction
- \$14.0 M

McCarty Lane Expansion I-35 to Hunter Road

- Construct 4-lanes in Ultimate ROW
- Planning
- County ENV Clearance
- ROW Preservation
- \$6.0 M

July 19, 2016

25

Winters Mill Intersection Safety Improvement Projects

- At RM 3237
 - \$0.4 M
- At RM 12
 - \$0.6 M

July 19, 2016

26

Project Information

Precinct 4

July 19, 2016

27

RM 150 West Realignment ROW & Utilities FM 2770 to I-35

- ROW Acquisition & Utility Relocations for Construction
- ROW Mapping
- ROW Acquisition
- Utility Relocations
- \$11.8 M

RM 150 Far West Extension RM 12 to US 290 West

- Construct 4-lane divided in Ultimate ROW
- Planning
- County ENV Clearance
- Design
- ROW Acquisition
- Utility Relocations
- Phased Construction
- \$34.1 M

July 19, 2016

28

<p>US 290 West Intersection Safety Improvements <i>McGregor to County Line</i></p>	<p>Darden Hill Widening & Turn Lanes <i>West of Sawyer Ranch Road to FM 1826</i></p>
<ul style="list-style-type: none"> • Improve 4 intersections • TxDOT ENV Clearance • Design • ROW Clips • Utility Relocations • Construction • \$4.0 M 	<ul style="list-style-type: none"> • Construct 3-lanes with turn lanes in Ultimate ROW • County ENV Clearance • Design • ROW Acquisition • Utility Relocations • Construction • \$18.5M
<p>July 19, 2016</p>	<p>29</p>

<p>Old Stagecoach Road Widening <i>RM 150 to Post Road</i></p>	<p>Post Road High Bridge</p>
<ul style="list-style-type: none"> • Widen to 28' section • County ENV Clearance • Design • ROW Acquisition • Utility Relocations • Construction • \$15.4 M 	<ul style="list-style-type: none"> • Construct new bridge and approaches • Planning • County ENV Clearance • Design • ROW Acquisition • Utility Relocations • Construction • \$8.7 M
<p>July 19, 2016</p>	<p>30</p>

Countywide Projects

July 19, 2016

31

Drainage/Low Water Crossings/Safety Improvements Bucket

- Countywide
- County Roads
- Off-System Bridges
- \$5.0 M

Environmental Mitigation (Habitat/Protection) Bucket

- Acquire Bird Habitat
- Aquifer Protection
- \$5.0 M

July 19, 2016

32

<p>Non-Motorized Transportation Bucket</p> <ul style="list-style-type: none"> • Hike & Bike Trails • \$5.0 M 	<p>TxDOT Partnership/Leverage</p> <ul style="list-style-type: none"> • Projects to be Determined • Includes I-35 Improvements • \$ TBD
---	--

July 19, 2016

33

TxDOT 2017 UTP and HB 20 Implementation

Strategic Priorities and Anticipated Performance Outcomes	
Top strategic priorities	Anticipated performance outcomes
Address safety	Reduce crashes and fatalities
Preserve assets	Maintain and preserve system/asset conditions
Target congestion/urban mobility needs	Mitigate congestion and improve reliability of system
Enhance regional connectivity corridors	Enhance connectivity and mobility
Focus on strategic initiatives (<i>energy sector, trade, and economic development</i>)	Enhance economic development opportunities; facilitate movement of freight and international trade

2017 UTP and HB 20 Implementation

06/29/2016

Source: TxDOT

TxDOT 2017 UTP and HB 20 Implementation

Additional Strategic Initiatives (\$5.2 billion – Total UTP Funding)

Beyond the strategic congestion initiative, an additional \$5.2 billion will be allocated.

- Support statewide priorities and strategic goal areas as set forth in HB 20 that:
 - Address safety
 - Preserve assets (highway and bridge conditions)
 - Target congestion/urban mobility needs
 - Enhance regional connectivity corridors
 - Focus on strategic initiatives (energy sector, trade & economic development)
- Funding can be allocated to projects with commission approval.
- Foster partnership for project funding with planning organizations and other stakeholders.

2017 UTP and HB 20 Implementation

06/29/2016

Source: TxDOT

TxDOT 2017 UTP and HB 20 Implementation

Category Funding and Strategic Initiative Alignment

Funding Categories	Safety	Preserve Assets		Congestion/ Mobility	Connectivity	Other *
		Maintenance	Bridge			
Category 1 - Maintenance and Rehabilitation		\$13.8B				
Category 2 - Metropolitan and Urban Corridors				\$12.5B		
Category 4 - Connectivity				\$5.0B	\$6.6B	
Category 5 - CMAQ (3 MPOs)				\$2.2B		
Category 6 - Bridge			\$3.5B			
Category 7 - Metropolitan Mobility (Large MPOs)				\$4.2B		
Category 8 - Safety	\$3.2B					
Category 9 - Transportation Alternatives						\$0.5B
Category 11 - District Discretionary	\$1.8B & \$2.1B (ES)**					
Category 12 - Strategic Priority				\$5.0B		

* Other - Includes bicycle, pedestrian, transit, and multi-modal projects.
 ** Energy Sector

Primary funding source for initiative
 Secondary funding source for initiative

2017 UTP and HB 20 Implementation

06/29/2016

Source: TxDOT

TxDOT 2017 UTP and HB 20 Implementation

Additional Funding for MPO Congestion and Mobility		
Metropolitan Planning Organization (District)	Additional Category 2 Funding Distributed Over 10 Years of UTP	
	% Distribution	\$ Amount
Abilene (ABL)	0.57	\$ 63,886,000
Amarillo (AMA)	0.92	103,275,000
Austin Area - CAMPO (AUS)	9.37	1,049,435,000
Beaumont - SETRPC (BMT)	2.34	261,662,000
Brownsville (PHR)	0.81	91,212,000
Bryan-College Station (BRY)	0.99	110,831,000
Corpus Christi (CRP)	1.34	150,388,000
Dallas/Ft. Worth - NCTCOG (DAL/FTW/PAR)	31.55	3,534,180,000
El Paso (ELP)	2.93	327,705,000
Harlingen-San Benito (PHR)	0.72	80,322,000
Hidalgo County (PHR)	2.98	334,172,000
Houston-Galveston Area - HGAC (BMT/HOU)	24.84	2,782,651,000
Killeen-Temple (BWD/WAC)	1.86	207,882,000

2017 UTP and HB 20 Implementation 06/29/2016 28

Source: TxDOT (highlighting added)

July 19, 2016

37

TxDOT 2017 UTP and HB 20 Implementation

Additional Funding for MPO Congestion and Mobility - continued		
Metropolitan Planning Organization (District)	Additional Category 2 Funding Distributed Over 10 Years of UTP	
	% Distribution	\$ Amount
Laredo (LRD)	0.91	\$ 101,924,000
Longview (ATL/TYL)	0.63	70,404,000
Lubbock (LBB)	0.92	103,089,000
Midland-Odessa - Permian Basin (AUS)	1.44	160,807,000
San Angelo (SJT)	0.37	41,854,000
San Antonio Area - AAMPO (SAT)	9.49	1,062,678,000
Sherman-Denison (PAR)	0.69	77,349,000
Texarkana (ATL)	0.33	37,197,000
Tyler (TYL)	1.25	139,983,000
Victoria (YKM)	0.63	70,173,000
Waco (WAC)	1.67	186,895,000
Wichita Falls (WFS)	0.46	51,558,000
TOTAL	100.00	\$ 11,201,512,000

2017 UTP and HB 20 Implementation 06/29/2016 29

Source: TxDOT (highlighting added)

July 19, 2016

38

Summary & Next Steps

July 19, 2016

39