

Commissioners Court -November 24, 2009
NOTICE OF A MEETING OF THE
COMMISSIONERS COURT OF HAYS COUNTY, TEXAS



This Notice is posted pursuant to the Texas Open Meetings Act. (VERNON'S TEXAS CODES ANN. GOV. CODE CH.551). The Hays County Commissioners Court will hold a meeting at **9:00 A.M.** on the 24TH day of **November, 2009**, in the Hays County Courthouse, Room 301, San Marcos, Texas. An Open Meeting will be held concerning the following subjects:

INVOCATION:

PLEDGE OF ALLEGIANCE - Pledge of Allegiance to the American Flag & Pledge of Allegiance to the Texas Flag
CALL TO ORDER /ROLL CALL

PRESENTATIONS & PROCLAMATIONS

1	5	Presentation by Sean Compton, TBG Partners, and a representative from the Ladybird Johnson Wildflower Center regarding Native Plant Re-vegetation on Hays County and TxDOT ROWs. Presentation may include a discussion of a Landscape Partnership between Hays County and TxDOT on current bond projects. Discussion and possible action to follow may include contracting with TBG and the Wildflower Center to provide services for a pilot project involving re-vegetation on the Pass Through Finance segment of Hwy 290. FORD
---	---	---

PUBLIC COMMENTS

At this time **3-MINUTE** comments will be taken from the audience on Non-Agenda related topics. To address the Court, please submit a Public Participation/ Witness Form to the County Clerk. Please Complete the Public Participation/ Witness Form in its Entirety.
NO ACTION MAY BE TAKEN BY THE COURT DURING PUBLIC COMMENTS.

CONSENT ITEMS

The following may be acted upon in one motion. A Commissioner, the County Judge, or a Citizen
May request items be pulled for separate discussion and/or action

2	6	Approve payments of county invoices. HERZOG
3	7-13	Approve Commissioner Court Minutes of November 16 and 17, 2009. SUMTER/FRITSCH
4	14-30	Approve Utility Permit. SUMTER
5	31-46	Approve the June 2009 Amended, July & August 2009 Treasurer's Report and Investments Reports. SUMTER/TUTTLE
6	47-48	Authorize the County Judge to execute an Amendment to Hays County's contract with Broadus and Associates for consulting services related to creating and managing RFP 2010-P03 County wide communications installation and services. INGALSBE

ACTION ITEMS

ROADS

7	49	Hold a public hearing with possible action to establish traffic regulations (speed limit) on McCarty Lane East, CR 233. INGALSBE/BORCHERDING
---	----	---

SUBDIVISIONS

8	50	09-4-28 Re-plat of Lot 9, Mountain Oaks Subdivision. Hold public hearing; discussion and possible action to consider approval of final plat. FORD/GARZA Back-Up in October 27th Agenda Packet.
9	51	Discussion and possible action to consider the acceptance of road construction, drainage improvements and release of the construction bond for High Pointe subdivision, Phase 4, Section 1A and Section 1B. FORD/BORCHERDING

MISCELLANEOUS

10	52-54	Discussion and possible action to approve a \$500.00 donation to co-sponsor a lunch for the San Marcos High School Student Government Day. SUMTER
11	55-56	Discussion and possible action to approve the Personal Health Department (PHD) hiring Part time/Temporary LVN's at \$20.00 per hour. SUMTER/HARGRAVES
12	57-58	Discussion and possible action to appoint Bryan Hannah a Pct. 1 representative to the Veteran's Task Force for Hays County. INGALSBE
13	59-64	Discussion and possible action to authorize the County Judge to execute a contract with Loomis Partners, Inc. in an amount not to exceed \$4000.00 for endangered species studies related to the Winters Mill/Blue Hole Loop Trail project and amend the budget accordingly. CONLEY/HAUFF
14	65-73	Discussion and possible action to authorize the County Judge to execute a Professional Services Agreement (PSA) with CH2M Hill for professional engineering services at RM 1826 and the intersection of Crystal Hill Drive and the intersection of RM 1826 and Nutty Brown Road, priority bond projects. FORD
15	74-81	Discussion and possible action to authorize the County Judge to execute a Professional Services Agreement (PSA) with Rogers Design Services for professional engineering services at RM 1826 and the intersection of Darden Hill Road (CR 163), and RM 1826 and the intersection of RM 967, priority road bond projects. FORD
16	82-92	Discussion and possible action to authorize the County Judge to execute a contract with Halff Associates, Inc. to prepare a grant application to the Texas Water Development Board for further flood protection planning studies in northern Hays County and provide necessary coordination activities associated with flood studies. FORD/HAUFF
17	93-94	Discussion and possible action regarding the process, procedures and timeline relating to the responses received to the public Call for Projects, including discussion of an RFQ for an entity to represent the County's interests in real estate negotiations and transactions. FORD
18	95-97	Discussion and possible action to make appointments to the Veteran's Task Force for Hays County and to hire Dr. Jim Bell from TSU to moderate discussions with the Task Force and to bring information and recommendations back to the Court. FORD/CONLEY
19	98	Discussion and possible action to appoint Robert Elder of Buda and David Wilson of Kyle as Pct. 2 representatives to the veteran services task force being developed by the county. BARTON
20	99	Discussion and possible action to appoint Ron Riggins to the Hays County Parks and Open Space Advisory Board. INGALSBE
21	100-132	Discussion and possible action to authorize the County Judge to execute a contract between Hays County and Bury & Partners for survey and replat of the Government Center Project property on Stagecoach Trail in San Marcos, Texas. INGALSBE
22	133-150	Discussion and possible action to authorize the County Judge to execute a contract for a check processing system between Hays County and Sage Capital Bank. SUMTER/CARAWAY
23	151-153	Discussion and possible action to adopt a resolution to urging the Texas Department of Transportation to review and approve plans and environmental documents for FM 1626 (Northern Segment) in a timely manner so that the project may proceed to construction as soon as possible. BARTON
24	154-158	Discussion and possible action to amend the budget related to transactional costs on the Dahlstrom Ranch Parks and Open Space Project. BARTON
25	159-164	Discussion and possible action to authorize the County Judge to execute a contract with Langford Community Management Services for \$30,000 for project management related to the Community Development Block Grant for the Cedar Oak Mesa Water System Improvement Project, Phase II. CONLEY/HAUFF

EXECUTIVE SESSIONS

The Commissioners Court will announce it will go into Executive Session, if necessary, pursuant to Chapter 551 of the Texas Government Code, to receive advice from Legal Counsel to discuss matters of land acquisition, litigation, and personnel matters as specifically listed on this agenda. The Commissioners' Court may also announce it will go into Executive Session, if necessary, to receive advice from Legal Counsel regarding any other item on this agenda.

26	165	Executive Session pursuant to 551.074 of the Texas Government Code, to deliberate the responsibilities and/or duties of the positions of Senior Planner and Subdivision Coordinator in Resource Protection, Transportation and Planning. INGALSBE
27	166	Executive Session pursuant to 551.071 of the Texas Government Code, consultation with legal counsel regarding pending or contemplated litigation related to the Hays County Corrections Facility. Possible action to follow in open court. SUMTER
28	167	Pursuant to Open Meetings Act, Texas Government Code 551.074, executive session to discuss personnel matters and to deliberate the evaluation of all individual department heads. FORD/BAEN

STANDING AGENDA ITEM

29		Discussion of issues related to proposed capital construction projects in Hays County, including but not limited to the government center; precinct offices; Resources Protection Transportation and Planning Department; and space needs projections for the Hays County Jail and related criminal justice analysis. Possible action may follow. INGALSBE
30		Discussion of issues related to the road bond projects, including updates from Mike Weaver, Prime Strategies and Jeff Curren, HDR. Possible action may follow. SUMTER

ADJOURNMENT

Posted by 5:00 o'clock P.M. on the 20TH day of November, 2009.

COMMISSIONERS COURT, HAYS COUNTY, TEXAS

CLERK OF THE COURT

Hays County encourages compliance with the Americans with Disabilities Act (ADA) in the conduct of all public meetings. To that end, persons with disabilities who plan to attend this meeting and who may need auxiliary aids such as an interpreter for a person who is hearing impaired are requested to contact the Hays County Judge's Office at (512) 393-2205 as soon as the meeting is posted (72 hours before the meeting) or as soon as practical so that appropriate arrangements can be made. While it would be helpful to receive as much advance notice as possible, Hays County will make every reasonable effort to accommodate any valid request regardless of when it is received. Braille is not available.

Agenda Item Request Form

Hays County Commissioners' Court

9:00 a.m. Every Tuesday

Request forms are due in the County Judge's Office

no later than 2:00 p.m. on WEDNESDAY.

Phone (512) 393-2205 Fax (512) 393-2282

AGENDA ITEM: Presentation by Sean Compton, TBG Partners, and a representative from the Ladybird Johnson Wildflower Center regarding Native Plant Revegetation on Hays County and TxDOT ROWs. Presentation may include a discussion of a Landscape Partnership between Hays County and TxDOT on current bond projects. Discussion and possible action to follow may include contracting with TBG and the Wildflower Center to provide services for a pilot project involving revegetation on the Pass Through Financed segment of Hwy 290.

TYPE OF ITEM: PRESENTATION WITH POSSIBLE ACTION

PREFERRED MEETING DATE REQUESTED: November 24, 2009; 10-15 minutes

AMOUNT REQUIRED:

LINE ITEM NUMBER OF FUNDS REQUIRED:

REQUESTED BY:

SPONSORED BY: Ford

SUMMARY:

Agenda Item Request Form

Hays County Commissioners' Court

2:00 p.m. Every Wednesday

Request forms are due in the County Judge's Office

no later than 2:00 p.m. on WEDNESDAY.

Phone (512) 393-2205 Fax (512) 393-2282

AGENDA ITEM: Approve payment of county invoices.

CHECK ONE: ☒ **CONSENT** ☐ **ACTION** ☐ **EXECUTIVE SESSION**
 ☐ **WORKSHOP** ☐ **PROCLAMATION** ☐ **PRESENTATION**

PREFERRED MEETING DATE REQUESTED: 11/24/09

AMOUNT REQUIRED: None

LINE ITEM NUMBER OF FUNDS REQUIRED: As attached.

REQUESTED BY: Auditor's Office

SPONSORED BY: Bill Herzog



SUMMARY:

Agenda Item Request Form

Hays County Commissioners' Court

9:00 a.m. Every Tuesday

Request forms are due in the County Judge's Office

no later than 2:00 p.m. on WEDNESDAY.

Phone (512) 393-2205 Fax (512) 393-2282

AGENDA ITEM: APPROVE COMMISSIONERS COURT MINUTES OF NOVEMBER 16 & 17, 2009

CHECK ONE: **X CONSENT** ☐ ACTION ☐ EXECUTIVE SESSION
 ☐ WORKSHOP ☐ PROCLAMATION ☐ PRESENTATION

PREFERRED MEETING DATE REQUESTED: NOVEMBER 24, 2009

AMOUNT REQUIRED:

LINE ITEM NUMBER OF FUNDS REQUIRED:

REQUESTED BY: FRITSCHÉ

SPONSORED BY: SUMTER

SUMMARY:



STATE OF TEXAS *
COUNTY OF HAYS *

ON THIS THE 16TH DAY OF NOVEMBER A.D., 2009, THE COMMISSIONERS' COURT OF HAYS COUNTY, TEXAS, MET IN SPECIAL MEETING. THE FOLLOWING MEMBERS WERE PRESENT, TO-WIT:

ELIZABETH "LIZ" SUMTER
DEBBIE GONZALES INGALSBE
LIZ GONZALEZ

COUNTY JUDGE
COMMISSIONER, PCT. 1
DEPUTY COUNTY CLERK

AND THE FOLLOWING MEMBERS WERE NOT PRESENT: JEFFERSON W. BARTON, COMMISSIONER, PCT. 2, WILL CONLEY, COMMISSIONER, PCT. 3 KAREN FORD, COMMISSIONER, PCT. 4; AND THE FOLLOWING PROCEEDINGS WERE HAD, THAT IS:

26620 CANVASS ELECTION RESULTS FOR CONSTITUTIONAL AMENDMENT ELECTION
HELD NOVEMBER 3, 2009

Joyce Cowan Elections Administrator gave a brief overview of the election. A motion was made by Commissioner Ingalsbe seconded by Judge Sumter to canvass Election Results for Constitutional Amendment Election held November 3, 2009. All voting "Aye". MOTION PASSED

Court was adjourned.

I, LINDA C. FRITSCHKE, COUNTY CLERK and EXOFFICIO CLERK OF THE COMMISSIONERS' COURT, do hereby certify that the foregoing contains a true and accurate record of the proceedings had by the Hays County Commissioners' Court on NOVEMBER 16, 2009.



LINDA C. FRITSCHKE, COUNTY CLERK AND EXOFFICIO
CLERK OF THE COMMISSIONERS' COURT OF
HAYS COUNTY, TEXAS



NOVEMBER 17, 2009

VOLUME U PAGE 241

STATE OF TEXAS *
COUNTY OF HAYS *

ON THIS THE 17TH DAY OF NOVEMBER A.D., 2009, THE COMMISSIONERS' COURT OF HAYS COUNTY, TEXAS, MET IN REGULAR MEETING. THE FOLLOWING MEMBERS WERE PRESENT, TO-WIT:

ELIZABETH "LIZ" SUMTER	COUNTY JUDGE
DEBBIE GONZALES INGALSBE	COMMISSIONER, PCT. 1
JEFFERSON W. BARTON	COMMISSIONER, PCT. 2
WILL CONLEY	COMMISSIONER, PCT. 3
KAREN FORD	COMMISSIONER, PCT. 4
LINDA C. FRITSCHKE	COUNTY CLERK

AND THE FOLLOWING PROCEEDINGS WERE HAD, THAT IS:

Commissioner Ford gave the invocation and Commissioner Ingalsbe led the court in the Pledge of Allegiance to the flags. Judge Sumter called the meeting to order.

26621 ADOPT A PROCLAMATION SUPPORTING SAN MARCOS HIGH SCHOOL STUDENT GOVERNMENT DAY AND RECOGNIZING DECEMBER 11, 2009 AS STUDENT GOVERNMENT DAY IN SAN MARCOS [T1-94]

Commissioner Ingalsbe introduced students that were selected by their peers to shadow various county officials on Government Day in San Marcos: County Judge Parisa Tajalli, Commissioner Pct. 1 Kristine Staggs, Commissioner Pct. 2 Julie Munoz, Commissioner Pct. 3 Edward Davilla, Commissioner Pct. 4 Jacob Flores, J.P. 1-1 Anna Pates, J.P. 1-2 E. J. Alva, Constable Pct. 1 Martha Roman, Sheriff Pamela Stover, CoCrt@Law#1 Judge Marcus D. Cruz, and CoCrt@Law#2 Judge Alex Selvera. A motion was made by Commissioner Ingalsbe, seconded by Judge Sumter to adopt a Proclamation supporting San Marcos High School Student Government Day and recognizing December 11, 2009 as Student Government Day in San Marcos. All voting "Aye". MOTION PASSED

26622 ADOPT A PROCLAMATION DECLARING NOVEMBER 17, 2009 AS WIMBERLEY LIONS CLUB DAY [T1-31]

A motion was made by Judge Sumter, seconded by Commissioner Ingalsbe to adopt a Proclamation declaring November 17, 2009 as Wimberley Lions Club Day. Commissioner Ingalsbe, Commissioner Ford, and Judge Sumter voting "Aye". Commissioner Barton and Commissioner Conley not present to vote. MOTION PASSED

26623 APPROVE PAYMENTS OF COUNTY INVOICES

A motion was made by Commissioner Ingalsbe, seconded by Commissioner Barton to approve payments of county invoices in the amount of \$163,597.75 as submitted by the County Auditor. All voting "Aye". MOTION PASSED

26624 APPROVE COMMISSIONER COURT MINUTES OF NOVEMBER 10, 2009

A motion was made by Commissioner Ingalsbe, seconded by Commissioner Barton to approve Commissioner Court Minutes of November 10, 2009 as presented by the County Clerk. All voting "Aye". MOTION PASSED

26625 APPROVE AN OVERTIME REIMBURSEMENT AGREEMENT WITH THE FEDERAL BUREAU OF INVESTIGATION RELATED TO CENTRAL TEXAS JOINT TERRORISM TASK FORCE PARTICIPATION, IN AN AMOUNT OF UP TO \$16,903.25 FOR FY2010 AND AMEND THE BUDGET ACCORDINGLY

A motion was made by Commissioner Ingalsbe, seconded by Commissioner Barton to approve an overtime Reimbursement Agreement with the Federal Bureau of Investigation related to Central Texas Joint Terrorism Task Force participation, in an amount of up to \$16,903.25 for FY2010 and amend the budget accordingly. All voting "Aye". MOTION PASSED



- 26626 APPROVE OUT OF STATE TRAVEL FOR CHARLES CHAPMAN RN, EMERGENCY PREPAREDNESS COORDINATOR TO ATTEND "PANDEMIC INFLUENZA PLANNING AND PREPAREDNESS AND WMD HANDS-ON-TRAINING" COURSE OF INSTRUCTION PROVIDED BY THE CENTER FOR DOMESTIC PREPAREDNESS, ANNISTON, AL 36205**

A motion was made by Commissioner Ingalsbe, seconded by Commissioner Barton to approve out of state travel for Charles Chapman RN, Emergency Coordinator to attend "Pandemic Influenza Planning and Preparedness and WMD Hands-on-Training" Course of instruction provided by the Center for Domestic Preparedness, Anniston, AL 36205. All voting "Aye". MOTION PASSED

- 26627 APPROVE COMMERCIAL OSSF PERMIT FOR ASSYRIA ENTERPRISES LOCATED 100 S. CANYONWOOD, DRIPPING SPRINGS, IN PRECINCT 4**

A motion was made by Commissioner Ingalsbe, seconded by Commissioner Barton to approve Commercial OSSF Permit for Assyria Enterprises located 100 S. Canyonwood, Dripping Springs, in Precinct 4. All voting "Aye". MOTION PASSED

- 26628 APPROVE THE TRANSFER OF FUNDS IN THE AMOUNT OF \$542.86 FROM LINE ITEM 001-618-00.5206 TO 001-618-00.5719 FOR THE PURCHASE OF A REPLACEMENT CAMERA AND AMEND THE BUDGET ACCORDINGLY**

A motion was made by Commissioner Ingalsbe, seconded by Commissioner Barton to approve the transfer of funds in the amount of \$542.86 from line item 001-618-00.5206 to 001-618-00.5719 for the purchase of a replacement camera and amend the budget accordingly. All voting "Aye". MOTION PASSED

- 26629 APPROVE REPLACEMENT OF ICE MAKER AT THE JUVENILE DETENTION CENTER NOT TO EXCEED \$3,551.00 AND AMEND THE BUDGET ACCORDINGLY**

A motion was made by Commissioner Ingalsbe, seconded by Commissioner Barton to approve replacement of ice maker at the Juvenile Detention Center not to exceed \$3,551.00 and amend the budget accordingly. All voting "Aye". MOTION PASSED

- 26630 APPROVE SPECIFICATIONS AND AUTHORIZE PURCHASING TO ADVERTISE RFP# 2010-P03 REGARDING PHONE SYSTEMS FOR HAYS COUNTY OFFICES [T1-754]**

Broaddus & Associates gave a powerpoint presentation regarding a countywide phone system. A motion was made by Judge Sumter, seconded by Commissioner Ingalsbe to approve specifications and authorize purchasing to advertise RFP#2010-P03 regarding phone systems for Hays County offices. All voting "Aye". MOTION PASSED.

- 26631 APPROVE BUDGET AMENDMENT 10-03**

A motion was made by Commissioner Ingalsbe, seconded by Commissioner Barton to approve budget amendment 10-03 as recommended by the County Auditor. All voting "Aye". MOTION PASSED

- 26632 RENEWAL OF EMERGENCY NOTIFICATION SYSTEM WITH CAPCOG AND AUTHORIZE THE COUNTY JUDGE TO EXECUTE A LETTER OF AGREEMENT**

A motion was made by Commissioner Ingalsbe, seconded by Commissioner Barton to approve renewal of Emergency Notification System with CAPCOG and authorize the County Judge to execute a Letter of Agreement. All voting "Aye". MOTION PASSED

PUBLIC COMMENT

Jimmy Skipton made public comment regarding OSSF rules.

Clerk's Note: Agenda Item #13 RE: REMOVE A SECTION OF GOFORTH RD, CR 157 NEAR THE INTERSECTION OF MATHIAS LANE, CR 123 FROM COUNTY MAINTENANCE AND RETURN ROW TO ADJACENT PROPERTY OWNERS was PULLED. NO DISCUSSION AND NO ACTION TAKEN.



NOVEMBER 17, 2009

VOLUME U PAGE 243

26633 ACCEPT NOMINATIONS FOR THE VETERAN'S TASK FORCE FOR HAYS COUNTY
[T1-454]

Judge Sumter nominated Jude Prather & Mary Ann Maycen. Commissioner Ingalsbe nominated Macario Mike Mendoza. A motion was made by Judge Sumter, seconded by Commissioner Ford to accept nominations of Jude Prather, Mary Ann Maycen, and Mike Mendoza for the Veteran's Task Force for Hays County. All voting "Aye". MOTION PASSED

Clerk's Note: Agenda Item #15 RE: HIRE NAISMITH ENGINEERING, INC. TO SUBMIT TO TCEQ AND FEMA VARIOUS DOCUMENTS AND RESEARCH DATA NEEDED TO OBTAIN AGENCY APPROVAL OF NEWLY ADOPTED DEVELOPMENT STANDARDS was PULLED. NO DISCUSSION AND NO ACTION TAKEN.

26634 AUTHORIZE THE COUNTY JUDGE TO EXECUTE CHANGE ORDER #4 TO THE CONTRACT WITH WESTAR CONSTRUCTION, INC. FOR A DEDUCTION AMOUNT OF \$16,000 FOR THE FIVE MILE DAM PARK CONSTRUCTION PROJECT [T1-513]

A motion was made by Commissioner Ingalsbe, seconded by Commissioner Conley to authorize the County Judge to execute Change Order #4 to the Contract with Westar Construction, Inc. for a deduction amount of \$16,000 for the Five Mile Dam Park Construction Project. All voting "Aye". MOTION PASSED

DISCUSSION RE: RESOLUTION BY THE COMMISSIONERS COURT OF HAYS COUNTY, TEXAS APPROVING AND AUTHORIZING PUBLICATION OF INTENTION TO ISSUE ONE OR MORE SERIES OF CERTIFICATION OF OBLIGATION; COMPLYING WITH THE REQUIREMENTS CONTAINED IN SECURITIES AND EXCHANGE COMMISSION RULE 15C2-12 AND RESOLVING OTHER MATTERS IN CONNECTION THEREWITH [T1-1888]

Bond Counsel Dan Wegmiller spoke of need to postpone action at this time. Suggested coming back in January for consideration. No action taken.

26635 ALTER THE INSULATION SPECIFICATIONS FOR THE SHERIFF'S OFFICE ROOFTOP PROJECT, RESULTING IN A HIGHER 'R' VALUE AND ADDITIONAL PROJECT COSTS [T1-2001]

A motion was made by Judge Sumter, seconded by Commissioner Ford to alter the insulation specifications for the Sheriff's Office Rooftop Project, resulting in a higher "R" Value and additional project costs NTE \$76,000 [bring it up to an R Value of 30]. All voting "Aye". MOTION PASSED

26636 AUTHORIZE THE COUNTY JUDGE TO FILE A LETTER WITH THE COMMISSION ON JAIL STANDARDS, PURSUANT TO 37 TAC 297.10, EXPRESSING DISAGREEMENT WITH THE COMMISSION'S REMEDIAL ORDER ISSUED ON OR ABOUT NOVEMBER 5, 2009 AND REQUESTING APPEARANCE BEFORE THE COMMISSION [T1-2259]

Special Counsel Mark Kennedy spoke of food service inspections (county & city officials) that resulted in a score of 82. Commissioner Conley spoke of inspections – there is no sanitary issue at the jail. Mark Kennedy stated that the inspectors felt like there were no safety issues and he is waiting for a written report. A motion was made by Commissioner Ingalsbe, seconded by Commissioner Conley to authorize the County Judge to file a Letter with the Commission's Remedial Order issued on or about November 5, 2009 and requesting appearance before the Commission. All voting "Aye". MOTION PASSED

26637 AUTHORIZE THE COUNTY JUDGE TO EXECUTE A RESOLUTION REGARDING APPLICATION TO THE TEXAS COMPTROLLER OF PUBLIC ACCOUNTS, STATE ENERGY CONSERVATION OFFICE FOR ENERGY EFFICIENCY AND CONSERVATION BLOCK GRANT (EECBG) FUNDING [T1-703]

Grants Administrator Jeff Hauff explained the grant. Funding may be utilized to develop and implement projects to improve energy efficiency and reduce energy use and fossil fuel emissions, including activities such as building energy audits and retrofits, installation of distributed energy technologies, installation of energy efficient traffic signals and street lighting, and installation of renewable energy technologies on government buildings. A motion was made by Commissioner Ford, seconded by Commissioner Conley to authorize the County Judge to execute a Resolution regarding application to the Texas Comptroller of Public Accounts, State Energy Conservation Office for Energy Efficiency and Conservation Block Grant (EECBG) Funding. All voting "Aye". MOTION PASSED



- 26638 AUTHORIZE EXECUTION OF A CONTRACT WITH TATEAUSTINHAWN, SELECTED FROM THE COUNTY'S PRE-CERTIFIED LIST OF TRANSPORTATION/BOND PROFESSIONAL SERVICE FIRMS, TO PROVIDE PUBLIC OUTREACH, INFORMATION AND PUBLIC PARTICIPATION ON VARIOUS ROAD AND BOND PROJECTS IN PCT. 2 AND POSSIBLY ELSEWHERE IN HAYS COUNTY [T 1-2895]**

Commissioner Barton explained the contract. A motion was made by Commissioner Barton, seconded by Commissioner Ingalsbe to authorize Commissioner Barton, along with Special Counsel Mark Kennedy and County Auditor Bill Herzog, to finalize and execute a Contract, NTE \$50,000, with TateAustinHahn, selected from the County's Pre-Certified list of Transportation/Bond Professional Service Firms, to provide public outreach information and public participation on various road and bond projects in Pct 2 and possibly elsewhere in Hays County. All voting "Aye". MOTION PASSED

- 26639 APPROVE DESIGN SUPPLEMENTAL AGREEMENT NO. 1 FOR PROFESSIONAL SERVICES WITH URS CORPORATION FOR WORK ON THE INTERSTATE 35 PASS THROUGH AGREEMENT (INTERSTATE 35-FM 150 EAST PHASE), AND TO AUTHORIZE THE EXECUTION OF SAID AGREEMENT [T1-3332]**

A motion was made by Commissioner Barton, seconded by Commissioner Ingalsbe to approve Design Supplemental Agreement No. 1 for Professional Services with URS Corporation for work on the Interstate 35 Pass Through Agreement (Interstate 35 – FM 15 East Phase) and to authorize the execution of said Agreement. All voting "Aye". MOTION PASSED

DISCUSSION REGARDING VETTER PARK, JOHNSON PARK AT FIVE MILE DAM AND COUNTY POLICY FOR PARK CLOSINGS [T1-580]

Discussion was had regarding closing of Vetter & Johnson Parks due to construction that is currently taking place. Jerry Pinnix spoke of health and safety concerns. Both parks should be re-opened by March 2010.

- 26640 AUTHORIZE COMMISSIONER FORD TO EXECUTE A PROFESSIONAL SERVICES AGREEMENT (PSA) WITH KENNEDY CONSULTING, INC. FOR PROFESSIONAL ENGINEERING SERVICES AT RR12 AND THE INTERSECTION OF SPORTS PARK DRIVE, A PRIORITY ROAD BOND PROJECT [T1-3486]**

A motion was made by Commissioner Ford, seconded by Commissioner Barton to authorize Commissioner Ford to execute a Professional Services Agreement (PSA) with Kennedy Consulting, Inc. for Professional Engineering Services at RR12 and the intersection of Sports Park Drive, a priority road bond project in an amount not to exceed \$125,000. All voting "Aye". MOTION PASSED

DISCUSSION OF GOVERNMENT CENTER SECURITY NEEDS [T1-1220]

Sheriff Tommy Ratliff spoke of reviewing security issues at the government center. He spoke of number of people needed to provide security (minimum of 15 Officers). He suggested hiring an outside entity to provide some of the security services. There are currently 9 security officers at the Justice Center plus bailiffs for each Court. Brenda Jenkins (Broadus & Associates) spoke of future meetings to determine needs.

DISCUSSION OF ISSUES RELATED TO PROPOSED CAPITAL CONSTRUCTION PROJECTS IN HAYS COUNTY, INCLUDING BUT NOT LIMITED TO THE GOVERNMENT CENTER; PRECINCT OFFICES; RESOURCES PROTECTION TRANSPORTATION AND PLANNING DEPARTMENT; AND SPACE NEEDS PROJECTIONS FOR THE HAYS COUNTY JAIL AND RELATED CRIMINAL JUSTICE ANALYSIS. POSSIBLE ACTION MAY FOLLOW [T2-1220]

This item was opened and discussed along with agenda item #25 RE: Government Center Security needs.

PURSUANT TO OPEN MEETINGS ACT, TEXAS GOVERNMENT CODE 551.074, EXECUTIVE SESSION TO DISCUSS PERSONNEL MATTERS AND TO DELIBERATE THE EVALUATION OF ALL INDIVIDUAL DEPARTMENT HEADS [T2-87]

Court convened into closed executive session at 1:30 p.m. and reconvened into open meeting at 4:30 p.m. No action taken.



NOVEMBER 17, 2009

VOLUME U PAGE 245

Clerk's Note: Agenda Item #28 RE: DISCUSSION OF ISSUES RELATED TO THE ROAD BOND PROJECTS, INCLUDING UPDATES FROM MIKE WEAVER, PRIME STRATEGIES AND JEFF CURREN, HDR was PULLED. No discussion and No action taken.

Court was adjourned.

I, LINDA C. FRITSCHKE, COUNTY CLERK and EXOFFICIO CLERK OF THE COMMISSIONERS' COURT, do hereby certify that the foregoing contains a true and accurate record of the proceedings had by the Hays County Commissioners' Court on NOVEMBER 17, 2009.



LINDA C. FRITSCHKE, COUNTY CLERK AND EXOFFICIO
CLERK OF THE COMMISSIONERS' COURT OF
HAYS COUNTY, TEXAS



Agenda Item Request Form

Hays County Commissioners' Court

9:00 a.m. Every Tuesday

Request forms are due in the County Judge's Office

no later than 2:00 p.m. on WEDNESDAY.

Phone (512) 393-2205 Fax (512) 393-2282

AGENDA ITEM: Approve Utility Permit:

CHECK ONE: ☒ **CONSENT** ☐ **ACTION** ☐ **EXECUTIVE SESSION**

☐ **WORKSHOP** ☐ **PROCLAMATION** ☐ **PRESENTATION**

PREFERRED MEETING DATE REQUESTED: November 24, 2009

AMOUNT REQUIRED:

LINE ITEM NUMBER OF FUNDS REQUIRED:

SPONSORED BY: SUMTER

Permit	Road Name	Type of Utility
# 02040	Quail Run	Water

PERMIT NO. : 02040 APPLICATION DATE : 11/17/2009 APPROVED DATE : 11/24/2009

CO. CODE : SANMAF Company Name: CITY OF SAN Type of Utility: WATER

City: SAN MARCOS Department: UTILITY DEPT.

ROAD NO. : CR272 ROAD NAME : Quail Run NAME Terry Conn, P.E.

SUBDIVISION : Deerwood Estates SEGMENT : 3

TYPE LINE : Water line

DESCRIPTION : Water line to be placed in right-of-way of
Quail Run

SPECIAL PROVISIONS : Traffic controls required; erosion controls
required; min 36" in depth; maintain 2' inside
right-of-way; special provisions if line is in
frontslope; notify Hays County 24 hrs prior to
construction



Road and Bridge Department
2171 Yarrington Road
P O Box 906
San Marcos, TX 78667-0906
(512) 393-7385

Application for Installation

Utility Line on Hays County Right of Way

Date: October 8, 2010

Formal notice is hereby given that the City of San Marcos, with Civil Engineering Consultants acting at their request, proposes to install a potable waterline within the right-of way of Quail Run, County Road 272, as follows:

1. A 12 inch diameter pipeline and appurtenances are proposed generally within and parallel to Quail Run right of way, particularly from approx. Sta 45+13 to the end of the project at Sta 78+00. In this area the pipeline crosses the road, is offset from the pavement and runs generally parallel and about 5 feet off of the pavement, is in parallel and adjoining easements involving dedicated and undedicated right of way, and in an existing easement. Proposed pipeline depths are in accordance with the Trench Schedule on Sheet D01 and associated details.
 2. At three crossings, using a 24 inch diameter 0.375" steel casing under flowable fill and minimum of 1.5 inches of Type D HMAAC. The three crossings are: Sta 45+13 to 45+59 on sheet W05, Station left at Sta 79+28 on sheet W06 connecting to a waterline on Oak Street, and Crossing #3 at approx. Sta 89+12 to Sta 89+60 on sheet W07.
 3. Flowable fill is shown over the 12 inch pipe placed parallel to the Quail Run centerline and under pavement on sheet W06 from approximate Sta 68+40 to Sta 77+76, using flowable fill per Trench Detail A on sheet D01. Pavement repl. to be 2 inches minimum of mill and overlay for the entire street section, also to use 1.5 inches of Type D HMAAC above 6 inches of asphalt stabilized base at the Lazy Lane connections.
 4. Traffic control is a required submittal and county notes have been added to the project supplemental conditions of the specifications.
- If the proposed installation is a parallel installation, then the installation shall be located two feet within the edge of right-of-way unless otherwise approved by the County.

The line will be constructed and maintained on the road right-of-way as directed by the Hays County Road Department (HCRD), an agency of the Commissioners Court of Hays County, in accordance with governing laws, including but not limited to the "Federal Clean Water Act," the "Federal Endangered Species Act," and the "Federal Historic Preservation Act." Upon request by the HCRD, proof of compliance with all governing laws, rules, and regulations will be submitted to HCRD before commencement of construction.

Our firm will use Best Management Practices to minimize erosion and sedimentation resulting from the proposed installation, and we will revegetate the project area as indicated under "General Special Provisions."

Our firm will insure that traffic control measures complying with applicable portions of the *Texas Manual of Uniform Traffic Control Devices* will be installed and maintained during this installation.

The location and description of the proposed line and appurtenances is more fully shown by the electronic set of drawings provided.

It is expressly understood that Hays County does not purport, hereby, to grant any right, claim, title, or easement in or upon this road; and it is further understood that Hays County may require the owner to relocate this line, subject to provisions of governing laws, by giving thirty (30) days' written notice.

It is understood and agreed that any damages sustained to the appurtenances installed under this proposal as a result of road construction and/or maintenance, including but not limited to mowing, ditch cleaning, culvert repair or replacement, roadway excavation and base work shall be the sole burden and expense of the owner.

Applicant agrees to notify HCRD prior to commencement of any routine of periodic maintenance which requires pruning of trees within the road right-of-way, so that the County may provide specifications for the extent and methods to govern in trimming, topping, tree balance, type of cuts, painting cuts and clean up.

The installation shall not damage any part of the road and adequate provisions must be made to cause minimum inconveniences to traffic and adjacent property owners. In the event the Applicant fails to comply with any or all of the requirements as set forth herein, Hays County may take such action as it deems appropriate to compel compliance.

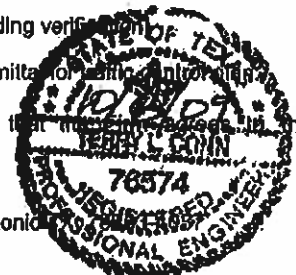
Construction of this line will begin on or after the 1st day of December 2009 (bidding schedule pending verification of conditions).

General Special Provisions: County Notes, flagmen when less than 2 lanes, 2 lanes at night, & submittals for traffic control.

By signing below, I certify that I am authorized to represent the Firm listed below, and that the firm agrees to the conditions/provisions included in this permit (prepared for the City of San Marcos as requested).

Firm: Civil Engineering Consultants
By (Print) Terry Conn, P.E.
Signature:

Title: Principal, Sr Project Manager
Address: 11550 IH10 West, Ste 395, San Antonio
Phone: 210.641.9999



Approved by Hays County Road & Bridge Department

Signature: Title: Inspector

Date: 11/17/09

June 26, 2006


Susan Clifford-Narvaez	Mayor
Kim Perretfeld	Place 1
Gayleod Bono	Place 2
Fred Terry	Place 3
Chris Jones	Place 4
Pam Cough	Place 5
John Thompson	Place 6
Rick Marshall	City Manager

Thomas P. Dugger, Director of Public Services

CFC
DON DURDEN, INC.
4343 CIVIL ENGINEERING CONSULTANTS
11650 IH 10 WEST, SUITE 395
SAN ANTONIO, TEXAS 78230-1087
TEL: (210) 841-8998
FAX: (210) 641-8440
REGISTRATION #F-2214

INDEX TO DRAWINGS	
DRAWING NO.	DESCRIPTION
1-10	General Layout & Planning
11-20	Site & General Conditions
21-30	Structural Details
31-40	Electrical Details
41-50	Plumbing Details
51-60	Mechanical Details
61-70	Interior Finishes
71-80	Exterior Finishes
81-90	Landscaping Details
91-100	Other Details

INTERIM REVIEW
THIS DOCUMENT HAS BEEN
RELEASED FOR INTERIM REVIEW
PURPOSES ONLY, UNDER THE
AUTHORITY OF
TERRY L. CONN, PE 76574
ON 10/1/2009

- | | | | | | |
|--------------|---|---------------------------------------|---|--|--|
| Sheet
W01 | PROJECT = E0322000 | CITY OF
San Marcos
TEXAS |  2004 PROPOSED 100
222 GULF COASTWAY DRIVE, SUITE 100
SAN MARCOS, TEXAS 78666-1000
TEL: (512) 388-1000
FAX: (512) 388-1001
WWW.SANMARCOS.TX | Date: 10/1/2009 | NOT FOR CONSTRUCTION
This document is released for
REVIEW, under the authority
of TERRY L. COHN, P.E. * 76574
on 10/1/2009 * |
| | GENERAL NOTES & QUANTITIES | | | Designed by TC
Drawn by JCO
Checked by: TC
000161
AS SHOWN | |
| | QUAIL RUN - SAN MARCOS
PROPOSED WATER LINE | | | | |

- | Item | Site No. & Name | Category | Length | Notes |
|------|--|----------|--------|-------|
| 1 | 5000100, 40, 41, 42, 43, 44, 45, 46, 47, 48, 49, 50, 51, 52, 53, 54, 55, 56, 57, 58, 59, 60, 61, 62, 63, 64, 65, 66, 67, 68, 69, 70, 71, 72, 73, 74, 75, 76, 77, 78, 79, 80, 81, 82, 83, 84, 85, 86, 87, 88, 89, 90, 91, 92, 93, 94, 95, 96, 97, 98, 99, 100, 101, 102, 103, 104, 105, 106, 107, 108, 109, 110, 111, 112, 113, 114, 115, 116, 117, 118, 119, 120, 121, 122, 123, 124, 125, 126, 127, 128, 129, 130, 131, 132, 133, 134, 135, 136, 137, 138, 139, 140, 141, 142, 143, 144, 145, 146, 147, 148, 149, 150, 151, 152, 153, 154, 155, 156, 157, 158, 159, 160, 161, 162, 163, 164, 165, 166, 167, 168, 169, 170, 171, 172, 173, 174, 175, 176, 177, 178, 179, 180, 181, 182, 183, 184, 185, 186, 187, 188, 189, 190, 191, 192, 193, 194, 195, 196, 197, 198, 199, 200, 201, 202, 203, 204, 205, 206, 207, 208, 209, 210, 211, 212, 213, 214, 215, 216, 217, 218, 219, 220, 221, 222, 223, 224, 225, 226, 227, 228, 229, 230, 231, 232, 233, 234, 235, 236, 237, 238, 239, 240, 241, 242, 243, 244, 245, 246, 247, 248, 249, 250, 251, 252, 253, 254, 255, 256, 257, 258, 259, 260, 261, 262, 263, 264, 265, 266, 267, 268, 269, 270, 271, 272, 273, 274, 275, 276, 277, 278, 279, 280, 281, 282, 283, 284, 285, 286, 287, 288, 289, 290, 291, 292, 293, 294, 295, 296, 297, 298, 299, 300, 301, 302, 303, 304, 305, 306, 307, 308, 309, 310, 311, 312, 313, 314, 315, 316, 317, 318, 319, 320, 321, 322, 323, 324, 325, 326, 327, 328, 329, 330, 331, 332, 333, 334, 335, 336, 337, 338, 339, 340, 341, 342, 343, 344, 345, 346, 347, 348, 349, 350, 351, 352, 353, 354, 355, 356, 357, 358, 359, 360, 361, 362, 363, 364, 365, 366, 367, 368, 369, 370, 371, 372, 373, 374, 375, 376, 377, 378, 379, 380, 381, 382, 383, 384, 385, 386, 387, 388, 389, 390, 391, 392, 393, 394, 395, 396, 397, 398, 399, 400, 401, 402, 403, 404, 405, 406, 407, 408, 409, 410, 411, 412, 413, 414, 415, 416, 417, 418, 419, 420, 421, 422, 423, 424, 425, 426, 427, 428, 429, 430, 431, 432, 433, 434, 435, 436, 437, 438, 439, 440, 441, 442, 443, 444, 445, 446, 447, 448, 449, 450, 451, 452, 453, 454, 455, 456, 457, 458, 459, 460, 461, 462, 463, 464, 465, 466, 467, 468, 469, 470, 471, 472, 473, 474, 475, 476, 477, 478, 479, 480, 481, 482, 483, 484, 485, 486, 487, 488, 489, 490, 491, 492, 493, 494, 495, 496, 497, 498, 499, 500, 501, 502, 503, 504, 505, 506, 507, 508, 509, 510, 511, 512, 513, 514, 515, 516, 517, 518, 519, 520, 521, 522, 523, 524, 525, 526, 527, 528, 529, 530, 531, 532, 533, 534, 535, 536, 537, 538, 539, 540, 541, 542, 543, 544, 545, 546, 547, 548, 549, 550, 551, 552, 553, 554, 555, 556, 557, 558, 559, 560, 561, 562, 563, 564, 565, 566, 567, 568, 569, 570, 571, 572, 573, 574, 575, 576, 577, 578, 579, 580, 581, 582, 583, 584, 585, 586, 587, 588, 589, 590, 591, 592, 593, 594, 595, 596, 597, 598, 599, 600, 601, 602, 603, 604, 605, 606, 607, 608, 609, 610, 611, 612, 613, 614, 615, 616, 617, 618, 619, 620, 621, 622, 623, 624, 625, 626, 627, 628, 629, 630, 631, 632, 633, 634, 635, 636, 637, 638, 639, 640, 641, 642, 643, 644, 645, 646, 647, 648, 649, 650, 651, 652, 653, 654, 655, 656, 657, 658, 659, 660, 661, 662, 663, 664, 665, 666, 667, 668, 669, 670, 671, 672, 673, 674, 675, 676, 677, 678, 679, 680, 681, 682, 683, 684, 685, 686, 687, 688, 689, 690, 691, 692, 693, 694, 695, 696, 697, 698, 699, 700, 701, 702, 703, 704, 705, 706, 707, 708, 709, 710, 711, 712, 713, 714, 715, 716, 717, 718, 719, 720, 721, 722, 723, 724, 725, 726, 727, 728, 729, 730, 731, 732, 733, 734, 735, 736, 737, 738, 739, 740, 741, 742, 743, 744, 745, 746, 747, 748, 749, 750, 751, 752, 753, 754, 755, 756, 757, 758, 759, 760, 761, 762, 763, 764, 765, 766, 767, 768, 769, 770, 771, 772, 773, 774, 775, 776, 777, 778, 779, 780, 781, 782, 783, 784, 785, 786, 787, 788, 789, 790, 791, 792, 793, 794, 795, 796, 797, 798, 799, 800, 801, 802, 803, 804, 805, 806, 807, 808, 809, 810, 811, 812, 813, 814, 815, 816, 817, 818, 819, 820, 821, 822, 823, 824, 825, 826, 827, 828, 829, 830, 831, 832, 833, 834, 835, 836, 837, 838, 839, 840, 841, 842, 843, 844, 845, 846, 847, 848, 849, 850, 851, 852, 853, 8 | | | |

Reference		8 inch	12 inch
Reference		inch	inch
1	Reference		
2	Reference		
3	Reference		
4	Reference		
5	Reference		
6	Reference		
7	Reference		
8	Reference		
9	Reference		
10	Reference		
11	Reference		
12	Reference		
13	Reference		
14	Reference		
15	Reference		
16	Reference		
17	Reference		
18	Reference		
19	Reference		
20	Reference		
21	Reference		
22	Reference		
23	Reference		
24	Reference		
25	Reference		
26	Reference		
27	Reference		
28	Reference		
29	Reference		
30	Reference		
31	Reference		
32	Reference		
33	Reference		
34	Reference		
35	Reference		
36	Reference		
37	Reference		
38	Reference		
39	Reference		
40	Reference		
41	Reference		
42	Reference		
43	Reference		
44	Reference		
45	Reference		
46	Reference		
47	Reference		
48	Reference		
49	Reference		
50	Reference		
51	Reference		
52	Reference		
53	Reference		
54	Reference		
55	Reference		
56	Reference		
57	Reference		
58	Reference		
59	Reference		
60	Reference		
61	Reference		
62	Reference		
63	Reference		
64	Reference		
65	Reference		
66	Reference		
67	Reference		
68	Reference		
69	Reference		
70	Reference		
71	Reference		
72	Reference		
73	Reference		
74	Reference		
75	Reference		
76	Reference		
77	Reference		
78	Reference		
79	Reference		
80	Reference		
81	Reference		
82	Reference		
83	Reference		
84	Reference		
85	Reference		
86	Reference		
87	Reference		
88	Reference		
89	Reference		
90	Reference		
91	Reference		
92	Reference		
93	Reference		
94	Reference		
95	Reference		
96	Reference		
97	Reference		
98	Reference		
99	Reference		
100	Reference		

[illegible]

UNDERGROUND UTILITY CROSSING SCHEDULE

[illegible][illegible]

Note: Contractors to projects of property owners regarding existing utilities on private properties during the course of the work, report any problems to the Engineer and Inspector, and work around those utilities unless required to complete the project.

ELECTRIC UTILITY CROSSING SCHEDULE

ELECTRIC UTILITY CROSSING SCHEDULE			
Item	Prop. Size, Vol.	Description	Notes, Status, Other
1	18" DB	Overhead Electric (Towers)	See Calendar entries regarding this item.
2	18" DB	Overhead Electric (Cables in Conduit) (See Item 1)	Use Calendar entries regarding this item, including special exceptions to the usual, but not necessarily the same, as to the Hydrocarbon Division. See 40-6007
3	44" DB	Overhead Electric (Towers)	See Calendar entries regarding this item.
4	44" DB	Overhead Electric (Cables in Conduit) (See Item 3)	Use Calendar entries regarding this item, including special exceptions to the usual, but not necessarily the same, as to the Hydrocarbon Division. See 40-6007
5	44" DB	Overhead Electric (Towers)	See Calendar entries regarding this item.
6	44" DB	Overhead Electric (Cables in Conduit) (See Item 5)	Use Calendar entries regarding this item, including special exceptions to the usual, but not necessarily the same, as to the Hydrocarbon Division. See 40-6007
7	44" DB	Overhead Electric (Towers)	See Calendar entries regarding this item.
8	44" DB	Overhead Electric (Cables in Conduit) (See Item 7)	Use Calendar entries regarding this item, including special exceptions to the usual, but not necessarily the same, as to the Hydrocarbon Division. See 40-6007
9	44" DB	Overhead Electric (Towers)	See Calendar entries regarding this item.
10	44" DB	Overhead Electric (Cables in Conduit) (See Item 9)	Use Calendar entries regarding this item, including special exceptions to the usual, but not necessarily the same, as to the Hydrocarbon Division. See 40-6007

While Uddy's critics said Uddy Bay was too hot to close permanently to the public in several areas, Bormay says that he is excited, depending on how the bay views develop. "Considerable effort already has been made to improve the bay," he says. "We will be looking at the bay and seeing what we can do to improve it. We will be looking at the bay and seeing what we can do to improve it. We will be looking at the bay and seeing what we can do to improve it."

The In Schedule

The 15 Species		
Item	File No. & Description	Notes
1	14-00241 Oak Island Quarry Station	Tr 15 - Oak Island Tr 15, 1927
2	14-00242 Oak Island Bay	Tr 15 - Oak Island Tr 15, 1927
3	00-00243 Mt. Pleasant S	Tr 15 - Oak Island Tr 15, 1927
4	14-00244 Mt. Pleasant S	Tr 15 - Oak Island Tr 15, 1927
5	20-00245 Oak Island	Tr 15 - Oak Island Tr 15, 1927
6	20-00246 Mt. Pleasant S	Tr 15 - Oak Island Tr 15, 1927
7	20-00247 Mt. Pleasant S	Tr 15 - Oak Island Tr 15, 1927
8	20-00248 Mt. Pleasant S	Tr 15 - Oak Island Tr 15, 1927
9	20-00249 Mt. Pleasant S	Tr 15 - Oak Island Tr 15, 1927
10	20-00250 Mt. Pleasant S	Tr 15 - Oak Island Tr 15, 1927
11	20-00251 Mt. Pleasant S	Tr 15 - Oak Island Tr 15, 1927
12	20-00252 Mt. Pleasant S	Tr 15 - Oak Island Tr 15, 1927
13	20-00253 Mt. Pleasant S	Tr 15 - Oak Island Tr 15, 1927
14	20-00254 Mt. Pleasant S	Tr 15 - Oak Island Tr 15, 1927
15	20-00255 Mt. Pleasant S	Tr 15 - Oak Island Tr 15, 1927

Abstract. The purpose of this study was to determine if there were differences in the prevalence of musculoskeletal disorders among construction workers who used different types of tools. A cross-sectional survey was conducted among 100 construction workers. The results showed that the prevalence of musculoskeletal disorders was higher among workers who used hand tools than among those who used power tools. The findings suggest that the use of hand tools may increase the risk of developing musculoskeletal disorders. Further research is needed to confirm these findings and to explore the underlying mechanisms.

EASEMENT / ROW SCHEDULE

EASEMENT / ROW SCHEDULE			
Item	Description	Status and Creation Scenario	Reference
1	Proposed 34' easement	to be established	MS 6070070
2	11'x10' Easement	to be established	
3	11'x10' Easement	to be established	
4	11'x10' Easement	to be established	
5	29'x10' Easement	to be established	
6	45'x10' Easement	to be established	
7	61'x10' Easement	to be established	
8	61'x10' Easement	to be established	
9	77'x10' Easement	to be established	
10	77'x10' Easement	to be established	

	10	E of J.R.C. Hill Station 10600 E. Highway 90, Suite 100 Englewood, CO 80150-7000
--	----	--

Equipment documents & survey provided by "CSC, Gordon Clark, P.E." - Byron & Assoc. Kyle Smith, R.L.S.

EXISTING SIGN SCHEDULE

EXISTING SIGN SCHEDULE		
Item	File No.	Location
1	96-0301	Interchange 38a
2	96-0301	Interchange 38b
3	96-0301	Interchange 38c
4	96-0301	Interchange 38d
5	96-0301	Interchange 38e
6	96-0301	Interchange 38f
7	96-0301	Interchange 38g
8	96-0301	Interchange 38h
9	96-0301	Interchange 38i
10	96-0301	Interchange 38j
11	96-0301	Interchange 38k
12	96-0301	Interchange 38l
13	96-0301	Interchange 38m
14	96-0301	Interchange 38n
15	96-0301	Interchange 38o
16	96-0301	Interchange 38p
17	96-0301	Interchange 38q
18	96-0301	Interchange 38r
19	96-0301	Interchange 38s
20	96-0301	Interchange 38t
21	96-0301	Interchange 38u
22	96-0301	Interchange 38v
23	96-0301	Interchange 38w
24	96-0301	Interchange 38x
25	96-0301	Interchange 38y
26	96-0301	Interchange 38z
27	96-0301	Interchange 38aa
28	96-0301	Interchange 38ab
29	96-0301	Interchange 38ac
30	96-0301	Interchange 38ad
31	96-0301	Interchange 38ae
32	96-0301	Interchange 38af
33	96-0301	Interchange 38ag
34	96-0301	Interchange 38ah
35	96-0301	Interchange 38ai
36	96-0301	Interchange 38aj
37	96-0301	Interchange 38ak
38	96-0301	Interchange 38al
39	96-0301	Interchange 38am
40	96-0301	Interchange 38an
41	96-0301	Interchange 38ao
42	96-0301	Interchange 38ap
43	96-0301	Interchange 38aq
44	96-0301	Interchange 38ar
45	96-0301	Interchange 38as
46	96-0301	Interchange 38at
47	96-0301	Interchange 38au
48	96-0301	Interchange 38av
49	96-0301	Interchange 38aw
50	96-0301	Interchange 38ax
51	96-0301	Interchange 38ay
52	96-0301	Interchange 38az
53	96-0301	Interchange 38ba
54	96-0301	Interchange 38bb
55	96-0301	Interchange 38bc
56	96-0301	Interchange 38bd
57	96-0301	Interchange 38be
58	96-0301	Interchange 38bf
59	96-0301	Interchange 38bg
60	96-0301	Interchange 38bh
61	96-0301	Interchange 38bi
62	96-0301	Interchange 38bj
63	96-0301	Interchange 38bk
64	96-0301	Interchange 38bl
65	96-0301	Interchange 38bm
66	96-0301	Interchange 38bn
67	96-0301	Interchange 38bo
68	96-0301	Interchange 38bp
69	96-0301	Interchange 38bq
70	96-0301	Interchange 38br
71	96-0301	Interchange 38bs
72	96-0301	Interchange 38bt
73	96-0301	Interchange 38bu
74	96-0301	Interchange 38bv
75	96-0301	Interchange 38bw
76	96-0301	Interchange 38bx
77	96-0301	Interchange 38by
78	96-0301	Interchange 38bz
79	96-0301	Interchange 38ca
80	96-0301	Interchange 38cb
81	96-0301	Interchange 38cc
82	96-0301	Interchange 38cd
83	96-0301	Interchange 38ce
84	96-0301	Interchange 38cf
85	96-0301	Interchange 38cg
86	96-0301	Interchange 38ch
87	96-0301	Interchange 38ci
88	96-0301	Interchange 38cj
89	96-0301	Interchange 38ck
90	96-0301	Interchange 38cl
91	96-0301	Interchange 38cm
92	96-0301	Interchange 38cn
93	96-0301	Interchange 38co
94	96-0301	Interchange 38cp
95	96-0301	Interchange 38cq
96	96-0301	Interchange 38cr
97	96-0301	Interchange 38cs
98	96-0301	Interchange 38ct
99	96-0301	Interchange 38cu
100	96-0301	Interchange 38cv
101	96-0301	Interchange 38cw

Note: Existing Signs to be protected, and displaying an actual work plan from Cambridge, temporarily relocated & replaced per General Order 11725 and County Practice. Damaged signs to be replaced MSPL.

VALVE SCHEDULE

VALVE SCHEDULE					Valve Name
Valve	Size	Location	Notes	Rel.	Rel. Setting
1	2" x 3/4"	2" x 3/4" (10' x 10')	NO VALVE BEHIND, EXTENDED BEHIND OTHER	1	500
2	2"	15' x 21' (10' x 10')	50' BEHIND, 10' BEHIND	1	500
3	2"	20' x 20' (10' x 10')	10' BEHIND, 10' BEHIND	1	500
4	2"	20' x 20' (10' x 10')	10' BEHIND, 10' BEHIND	1	500
5	2"	20' x 20' (10' x 10')	10' BEHIND, 10' BEHIND	1	500
6	2"	20' x 20' (10' x 10')	10' BEHIND, 10' BEHIND	1	500
7	2"	20' x 20' (10' x 10')	10' BEHIND, 10' BEHIND	1	500
8	2"	20' x 20' (10' x 10')	10' BEHIND, 10' BEHIND	1	500
9	2"	20' x 20' (10' x 10')	10' BEHIND, 10' BEHIND	1	500
10	2"	20' x 20' (10' x 10')	10' BEHIND, 10' BEHIND	1	500
11	2"	20' x 20' (10' x 10')	10' BEHIND, 10' BEHIND	1	500
12	2"	20' x 20' (10' x 10')	10' BEHIND, 10' BEHIND	1	500
13	2"	20' x 20' (10' x 10')	10' BEHIND, 10' BEHIND	1	500
14	2"	20' x 20' (10' x 10')	10' BEHIND, 10' BEHIND	1	500

NOT FOR CONSTRUCTION
This document is released for
REVIEW, under the authority
of TERRY L. COON, P.E. # 76574
on 10/1/2009.

Date: 10/1/2009
Designed by: TC
Drawn by: JCO
Checked by: TC
Scale:

DOE DYNEN, INC.
FACETS CHROMIUM CHROME
21641 18 10 WEST, SUITE 01
SAN ANTONIO, TEXAS 78240-1931
TELE (214) 661-1979
FAX (214) 661-5496
REGISTRATION 07-0114

CITY OF
San Marcos
TEXAS

PROJECT # E0322000
GENERAL NOTES & QUANTITIES
QUAIL RUN - SAN MARCOS
PROPOSED WATER LINE

Sheet M03

[illegible]

THIS SHEET PHASE 2

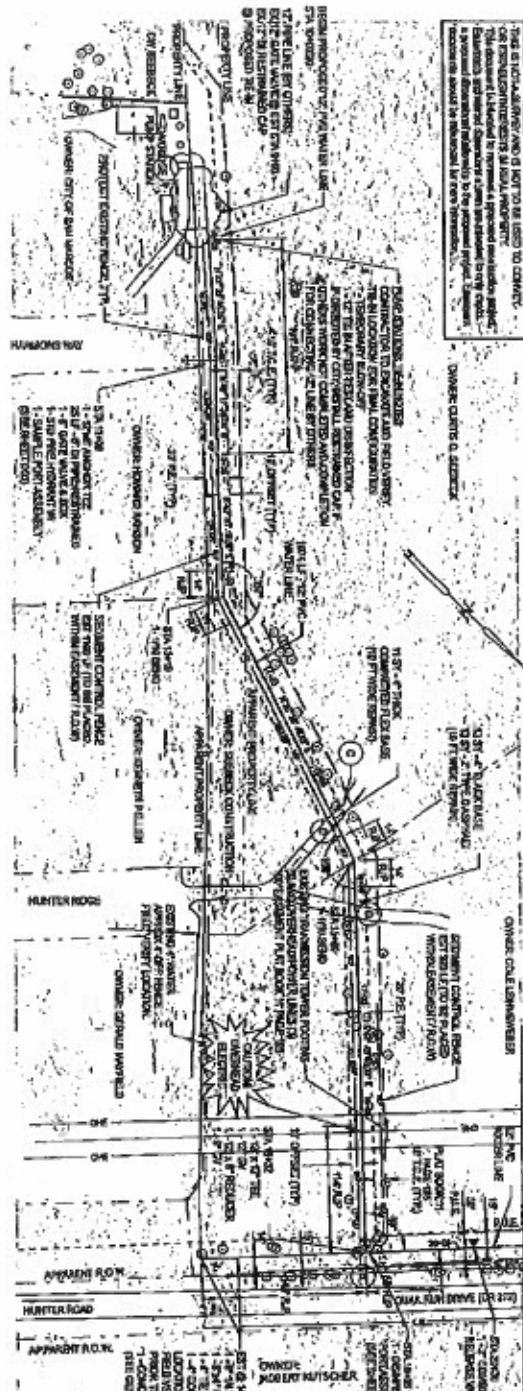
Sheet W04	PROJECT - E0322000
	WATER PLAN SHEET 01
	QUAIL RUN - SAN MARCOS PROPOSED WATER LINE

CITY OF
San Marcos
TEXAS

CEC
 800.855.5555
 1000 S. Orange Ave., Suite 100
 Tampa, FL 33606
 FAX 813.251.1111
 WWW.CECFLA.COM

Date: 10/1/2009
Designed by: TC
Drawn by: JSQ
Checked by: TC
Scale:
AS SYSTEM

NOT FOR CONSTRUCTION
This document is released for
REVIEW, under the authority
of TERRY L. COON, P.E. # 76374
on 10/17/2000.



MATCH LINE - THIS SHEET

KEY NOTES

NAME _____

1. PROJECT DESIGN CLIENT
(SEE GENERAL NOTE C) M

2. MATERIAL ACCESS AT ALL TIMES
TO ORIGINAL CONSTRUCTION
PROJECT OF NEW AIR-RESIST.
UNITED AND APPROPRIATE
SEE GENERAL NOTE C) M

3. EXISTING WALLS
(SEE GENERAL NOTE C) M

4. EXISTING WINTER SERVICE MASTER
CUMULATIVE WATER TO PROPOSED
WATER MAIN

5. PROJECT MATERIALS
(SEE GENERAL NOTE C) M

6. FURNACE, CLASS 2C

7. FURNACE, CLASS 2C

8. FURNACE, CLASS 2C

9. FURNACE, CLASS 2C

10. FURNACE, CLASS 2C

11. FURNACE, CLASS 2C

12. FURNACE, CLASS 2C

13. FURNACE, CLASS 2C

14. FURNACE, CLASS 2C

15. FURNACE, CLASS 2C

16. FURNACE, CLASS 2C

17. FURNACE, CLASS 2C

18. FURNACE, CLASS 2C

19. FURNACE, CLASS 2C

20. FURNACE, CLASS 2C

21. FURNACE, CLASS 2C

22. FURNACE, CLASS 2C

23. FURNACE, CLASS 2C

24. FURNACE, CLASS 2C

25. FURNACE, CLASS 2C

26. FURNACE, CLASS 2C

27. FURNACE, CLASS 2C

28. FURNACE, CLASS 2C

29. FURNACE, CLASS 2C

30. FURNACE, CLASS 2C

31. FURNACE, CLASS 2C

32. FURNACE, CLASS 2C

33. FURNACE, CLASS 2C

34. FURNACE, CLASS 2C

35. FURNACE, CLASS 2C

36. FURNACE, CLASS 2C

37. FURNACE, CLASS 2C

38. FURNACE, CLASS 2C

39. FURNACE, CLASS 2C

40. FURNACE, CLASS 2C

41. FURNACE, CLASS 2C

42. FURNACE, CLASS 2C

43. FURNACE, CLASS 2C

44. FURNACE, CLASS 2C

45. FURNACE, CLASS 2C

46. FURNACE, CLASS 2C

47. FURNACE, CLASS 2C

48. FURNACE, CLASS 2C

49. FURNACE, CLASS 2C

50. FURNACE, CLASS 2C

51. FURNACE, CLASS 2C

52. FURNACE, CLASS 2C

53. FURNACE, CLASS 2C

54. FURNACE, CLASS 2C

55. FURNACE, CLASS 2C

56. FURNACE, CLASS 2C

57. FURNACE, CLASS 2C

58. FURNACE, CLASS 2C

59. FURNACE, CLASS 2C

60. FURNACE, CLASS 2C

61. FURNACE, CLASS 2C

62. FURNACE, CLASS 2C

63. FURNACE, CLASS 2C

64. FURNACE, CLASS 2C

65. FURNACE, CLASS 2C

66. FURNACE, CLASS 2C

67. FURNACE, CLASS 2C

68. FURNACE, CLASS 2C

69. FURNACE, CLASS 2C

70. FURNACE, CLASS 2C

71. FURNACE, CLASS 2C

72. FURNACE, CLASS 2C

73. FURNACE, CLASS 2C

74. FURNACE, CLASS 2C

75. FURNACE, CLASS 2C

76. FURNACE, CLASS 2C

77. FURNACE, CLASS 2C

78. FURNACE, CLASS 2C

79. FURNACE, CLASS 2C

80. FURNACE, CLASS 2C

81. FURNACE, CLASS 2C

82. FURNACE, CLASS 2C

83. FURNACE, CLASS 2C

84. FURNACE, CLASS 2C

85. FURNACE, CLASS 2C

86. FURNACE, CLASS 2C

87. FURNACE, CLASS 2C

88. FURNACE, CLASS 2C

89. FURNACE, CLASS 2C

90. FURNACE, CLASS 2C

91. FURNACE, CLASS 2C

92. FURNACE, CLASS 2C

93. FURNACE, CLASS 2C

94. FURNACE, CLASS 2C

95. FURNACE, CLASS 2C

96. FURNACE, CLASS 2C

97. FURNACE, CLASS 2C

98. FURNACE, CLASS 2C

99. FURNACE, CLASS 2C

100. FURNACE, CLASS 2C

101. FURNACE, CLASS 2C

102. FURNACE, CLASS 2C

103. FURNACE, CLASS 2C

104. FURNACE, CLASS 2C

105. FURNACE, CLASS 2C

106. FURNACE, CLASS 2C

107. FURNACE, CLASS 2C

108. FURNACE, CLASS 2C

109. FURNACE, CLASS 2C

110. FURNACE, CLASS 2C

111. FURNACE, CLASS 2C

112. FURNACE, CLASS 2C

113. FURNACE, CLASS 2C

114. FURNACE, CLASS 2C

115. FURNACE, CLASS 2C

116. FURNACE, CLASS 2C

117. FURNACE, CLASS 2C

118. FURNACE, CLASS 2C

119. FURNACE, CLASS 2C

120. FURNACE, CLASS 2C

121. FURNACE, CLASS 2C

122. FURNACE, CLASS 2C

123. FURNACE, CLASS 2C

124. FURNACE, CLASS 2C

125. FURNACE, CLASS 2C

126. FURNACE, CLASS 2C

127. FURNACE, CLASS 2C

128. FURNACE, CLASS 2C

129. FURNACE, CLASS 2C

130. FURNACE, CLASS 2C

131. FURNACE, CLASS 2C

132. FURNACE, CLASS 2C

133. FURNACE, CLASS 2C

134. FURNACE, CLASS 2C

135. FURNACE, CLASS 2C

136. FURNACE, CLASS 2C

137. FURNACE, CLASS 2C

138. FURNACE, CLASS 2C

139. FURNACE, CLASS 2C

140. FURNACE, CLASS 2C

141. FURNACE, CLASS 2C

142. FURNACE, CLASS 2C

143. FURNACE, CLASS 2C

144. FURNACE, CLASS 2C

145. FURNACE, CLASS 2C

146. FURNACE, CLASS 2C

147. FURNACE, CLASS 2C

148. FURNACE, CLASS 2C

149. FURNACE, CLASS 2C

150. FURNACE, CLASS 2C

151. FURNACE, CLASS 2C

152. FURNACE, CLASS 2C

153. FURNACE, CLASS 2C

154. FURNACE, CLASS 2C

155. FURNACE, CLASS 2C

156. FURNACE, CLASS 2C

157. FURNACE, CLASS 2C

158. FURNACE, CLASS 2C

159. FURNACE, CLASS 2C

160. FURNACE, CLASS 2C

161. FURNACE, CLASS 2C

162. FURNACE, CLASS 2C

163. FURNACE, CLASS 2C

164. FURNACE, CLASS 2C

165. FURNACE, CLASS 2C

166. FURNACE, CLASS 2C

167. FURNACE, CLASS 2C

168. FURNACE, CLASS 2C

169. FURNACE, CLASS 2C

170. FURNACE, CLASS 2C

171. FURNACE, CLASS 2C

172. FURNACE, CLASS 2C

173. FURNACE, CLASS 2C

174. FURNACE, CLASS 2C

175. FURNACE, CLASS 2C

176. FURNACE, CLASS 2C

177. FURNACE, CLASS 2C

178. FURNACE, CLASS 2C

179. FURNACE, CLASS 2C

180. FURNACE, CLASS 2C

181. FURNACE, CLASS 2C

182. FURNACE, CLASS 2C

183. FURNACE, CLASS 2C

184. FURNACE, CLASS 2C

185. FURNACE, CLASS 2C

186. FURNACE, CLASS 2C

187. FURNACE, CLASS 2C

188. FURNACE, CLASS 2C

189. FURNACE, CLASS 2C

190. FURNACE, CLASS 2C

191. FURNACE, CLASS 2C

192. FURNACE, CLASS 2C

193. FURNACE, CLASS 2C

194. FURNACE, CLASS 2C

195. FURNACE, CLASS 2C

196. FURNACE, CLASS 2C

197. FURNACE, CLASS 2C

198. FURNACE, CLASS 2C

199. FURNACE, CLASS 2C

200. FURNACE, CLASS 2C

201. FURNACE, CLASS 2C

202. FURNACE, CLASS 2C

203. FURNACE, CLASS 2C

204. FURNACE, CLASS 2C

205. FURNACE, CLASS 2C

206. FURNACE, CLASS 2C

207. FURNACE, CLASS 2C

208. FURNACE, CLASS 2C

209. FURNACE, CLASS 2C

210. FURNACE, CLASS 2C

211. FURNACE, CLASS 2C

212. FURNACE, CLASS 2C

213. FURNACE, CLASS 2C

214. FURNACE, CLASS 2C

215. FURNACE, CLASS 2C

216. FURNACE, CLASS 2C

217. FURNACE, CLASS 2C

218. FURNACE, CLASS 2C

219. FURNACE, CLASS 2C

220. FURNACE, CLASS 2C

221. FURNACE, CLASS 2C

222. FURNACE, CLASS 2C

223. FURNACE, CLASS 2C

224. FURNACE, CLASS 2C

225. FURNACE, CLASS 2C

226. FURNACE, CLASS 2C

227. FURNACE, CLASS 2C

228. FURNACE, CLASS 2C

229. FURNACE, CLASS 2C

230. FURNACE, CLASS 2C

231. FURNACE, CLASS 2C

232. FURNACE, CLASS 2C

233. FURNACE, CLASS 2C

234. FURNACE, CLASS 2C

235. FURNACE, CLASS 2C

236. FURNACE, CLASS 2C

237. FURNACE, CLASS 2C

238. FURNACE, CLASS 2C

239. FURNACE, CLASS 2C

240. FURNACE, CLASS 2C

241. FURNACE, CLASS 2C

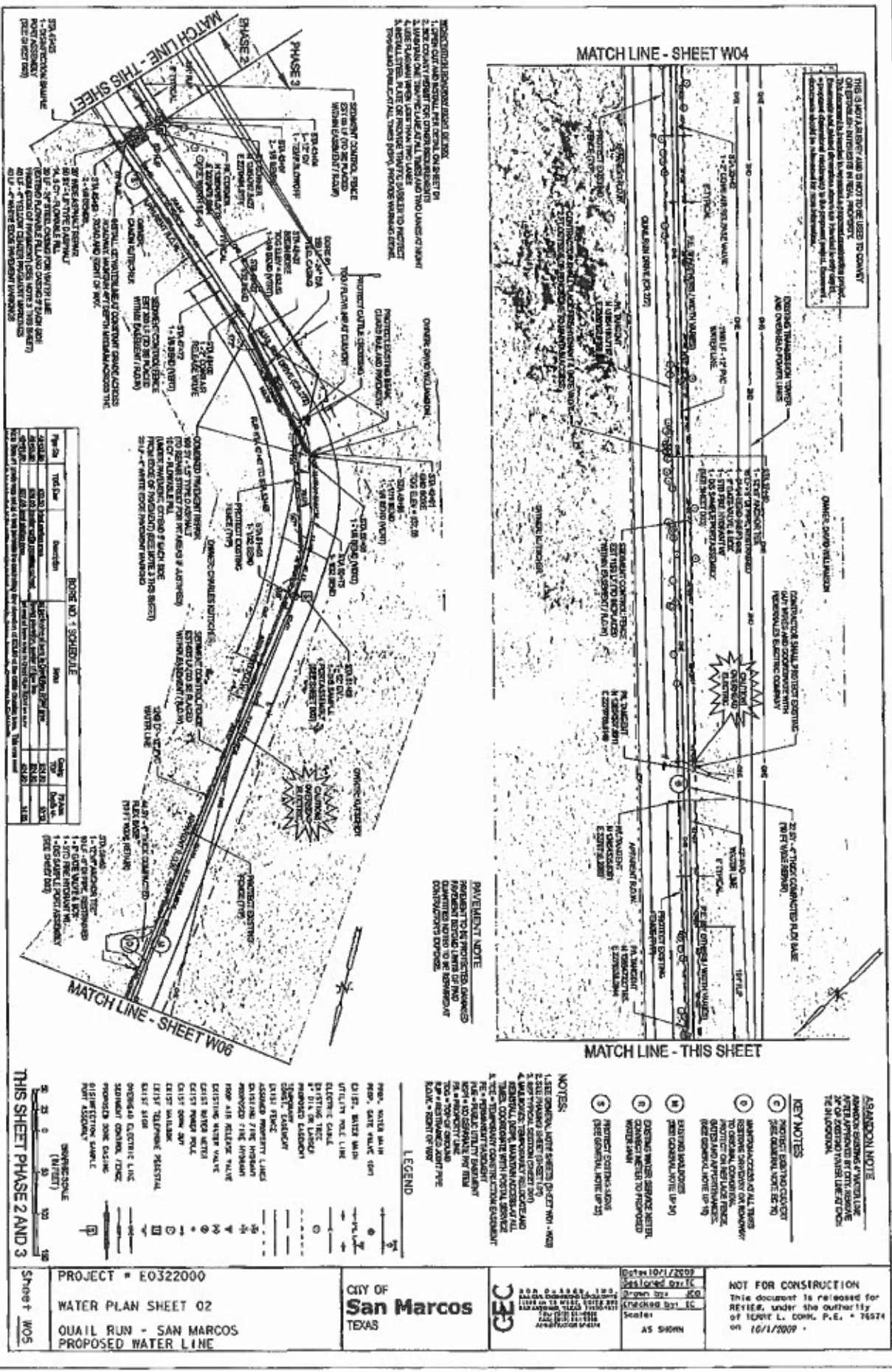
242. FURNACE, CLASS 2C

243. FURNACE, CLASS 2C

244. F

ABANDON NOTE
 A BATHING EXISTING AT WATER LINE
 AFTER APPROVED BY CITY, REMOVE
 24" OF EXISTING WATER LINE AT EACH
 THE IN LOCATION.

LEGEND



ITEM NO.	DESCRIPTION	QUANTITY	UNIT	PRICE	TOTAL
1	1" DIA. WATER LINE	100	LINEAL FEET	1.00	100.00
2	2" DIA. WATER LINE	50	LINEAL FEET	2.00	100.00
3	3" DIA. WATER LINE	25	LINEAL FEET	3.00	75.00
4	4" DIA. WATER LINE	10	LINEAL FEET	4.00	40.00
5	5" DIA. WATER LINE	5	LINEAL FEET	5.00	25.00
6	6" DIA. WATER LINE	2	LINEAL FEET	6.00	12.00
7	7" DIA. WATER LINE	1	LINEAL FEET	7.00	7.00
8	8" DIA. WATER LINE	1	LINEAL FEET	8.00	8.00
9	9" DIA. WATER LINE	1	LINEAL FEET	9.00	9.00
10	10" DIA. WATER LINE	1	LINEAL FEET	10.00	10.00
11	11" DIA. WATER LINE	1	LINEAL FEET	11.00	11.00
12	12" DIA. WATER LINE	1	LINEAL FEET	12.00	12.00
13	13" DIA. WATER LINE	1	LINEAL FEET	13.00	13.00
14	14" DIA. WATER LINE	1	LINEAL FEET	14.00	14.00
15	15" DIA. WATER LINE	1	LINEAL FEET	15.00	15.00
16	16" DIA. WATER LINE	1	LINEAL FEET	16.00	16.00
17	17" DIA. WATER LINE	1	LINEAL FEET	17.00	17.00
18	18" DIA. WATER LINE	1	LINEAL FEET	18.00	18.00
19	19" DIA. WATER LINE	1	LINEAL FEET	19.00	19.00
20	20" DIA. WATER LINE	1	LINEAL FEET	20.00	20.00
21	21" DIA. WATER LINE	1	LINEAL FEET	21.00	21.00
22	22" DIA. WATER LINE	1	LINEAL FEET	22.00	22.00
23	23" DIA. WATER LINE	1	LINEAL FEET	23.00	23.00
24	24" DIA. WATER LINE	1	LINEAL FEET	24.00	24.00
25	25" DIA. WATER LINE	1	LINEAL FEET	25.00	25.00
26	26" DIA. WATER LINE	1	LINEAL FEET	26.00	26.00
27	27" DIA. WATER LINE	1	LINEAL FEET	27.00	27.00
28	28" DIA. WATER LINE	1	LINEAL FEET	28.00	28.00
29	29" DIA. WATER LINE	1	LINEAL FEET	29.00	29.00
30	30" DIA. WATER LINE	1	LINEAL FEET	30.00	30.00
31	31" DIA. WATER LINE	1	LINEAL FEET	31.00	31.00
32	32" DIA. WATER LINE	1	LINEAL FEET	32.00	32.00
33	33" DIA. WATER LINE	1	LINEAL FEET	33.00	33.00
34	34" DIA. WATER LINE	1	LINEAL FEET	34.00	34.00
35	35" DIA. WATER LINE	1	LINEAL FEET	35.00	35.00
36	36" DIA. WATER LINE	1	LINEAL FEET	36.00	36.00
37	37" DIA. WATER LINE	1	LINEAL FEET	37.00	37.00
38	38" DIA. WATER LINE	1	LINEAL FEET	38.00	38.00
39	39" DIA. WATER LINE	1	LINEAL FEET	39.00	39.00
40	40" DIA. WATER LINE	1	LINEAL FEET	40.00	40.00
41	41" DIA. WATER LINE	1	LINEAL FEET	41.00	41.00
42	42" DIA. WATER LINE	1	LINEAL FEET	42.00	42.00
43	43" DIA. WATER LINE	1	LINEAL FEET	43.00	43.00
44	44" DIA. WATER LINE	1	LINEAL FEET	44.00	44.00
45	45" DIA. WATER LINE	1	LINEAL FEET	45.00	45.00
46	46" DIA. WATER LINE	1	LINEAL FEET	46.00	46.00
47	47" DIA. WATER LINE	1	LINEAL FEET	47.00	47.00
48	48" DIA. WATER LINE	1	LINEAL FEET	48.00	48.00
49	49" DIA. WATER LINE	1	LINEAL FEET	49.00	49.00
50	50" DIA. WATER LINE	1	LINEAL FEET	50.00	50.00
51	51" DIA. WATER LINE	1	LINEAL FEET	51.00	51.00
52	52" DIA. WATER LINE	1	LINEAL FEET	52.00	52.00
53	53" DIA. WATER LINE	1	LINEAL FEET	53.00	53.00
54	54" DIA. WATER LINE	1	LINEAL FEET	54.00	54.00
55	55" DIA. WATER LINE	1	LINEAL FEET	55.00	55.00
56	56" DIA. WATER LINE	1	LINEAL FEET	56.00	56.00
57	57" DIA. WATER LINE	1	LINEAL FEET	57.00	57.00
58	58" DIA. WATER LINE	1	LINEAL FEET	58.00	58.00
59	59" DIA. WATER LINE	1	LINEAL FEET	59.00	59.00
60	60" DIA. WATER LINE	1	LINEAL FEET	60.00	60.00
61	61" DIA. WATER LINE	1	LINEAL FEET	61.00	61.00
62	62" DIA. WATER LINE	1	LINEAL FEET	62.00	62.00
63	63" DIA. WATER LINE	1	LINEAL FEET	63.00	63.00
64	64" DIA. WATER LINE	1	LINEAL FEET	64.00	64.00
65	65" DIA. WATER LINE	1	LINEAL FEET	65.00	65.00
66	66" DIA. WATER LINE	1	LINEAL FEET	66.00	66.00
67	67" DIA. WATER LINE	1	LINEAL FEET	67.00	67.00
68	68" DIA. WATER LINE	1	LINEAL FEET	68.00	68.00
69	69" DIA. WATER LINE	1	LINEAL FEET	69.00	69.00
70	70" DIA. WATER LINE	1	LINEAL FEET	70.00	70.00
71	71" DIA. WATER LINE	1	LINEAL FEET	71.00	71.00
72	72" DIA. WATER LINE	1	LINEAL FEET	72.00	72.00
73	73" DIA. WATER LINE	1	LINEAL FEET	73.00	73.00
74	74" DIA. WATER LINE	1	LINEAL FEET	74.00	74.00
75	75" DIA. WATER LINE	1	LINEAL FEET	75.00	75.00
76	76" DIA. WATER LINE	1	LINEAL FEET	76.00	76.00
77	77" DIA. WATER LINE	1	LINEAL FEET	77.00	77.00
78	78" DIA. WATER LINE	1	LINEAL FEET	78.00	78.00
79	79" DIA. WATER LINE	1	LINEAL FEET	79.00	79.00
80	80" DIA. WATER LINE	1	LINEAL FEET	80.00	80.00
81	81" DIA. WATER LINE	1	LINEAL FEET	81.00	81.00
82	82" DIA. WATER LINE	1	LINEAL FEET	82.00	82.00
83	83" DIA. WATER LINE	1	LINEAL FEET	83.00	83.00
84	84" DIA. WATER LINE	1	LINEAL FEET	84.00	84.00
85	85" DIA. WATER LINE	1	LINEAL FEET	85.00	85.00
86	86" DIA. WATER LINE	1	LINEAL FEET	86.00	86.00
87	87" DIA. WATER LINE	1	LINEAL FEET	87.00	87.00
88	88" DIA. WATER LINE	1	LINEAL FEET	88.00	88.00
89	89" DIA. WATER LINE	1	LINEAL FEET	89.00	89.00
90	90" DIA. WATER LINE	1	LINEAL FEET	90.00	90.00
91	91" DIA. WATER LINE	1	LINEAL FEET	91.00	91.00
92	92" DIA. WATER LINE	1	LINEAL FEET	92.00	92.00
93	93" DIA. WATER LINE	1	LINEAL FEET	93.00	93.00
94	94" DIA. WATER LINE	1	LINEAL FEET	94.00	94.00
95	95" DIA. WATER LINE	1	LINEAL FEET	95.00	95.00
96	96" DIA. WATER LINE	1	LINEAL FEET	96.00	96.00
97	97" DIA. WATER LINE	1	LINEAL FEET	97.00	97.00
98	98" DIA. WATER LINE	1	LINEAL FEET	98.00	98.00
99	99" DIA. WATER LINE	1	LINEAL FEET	99.00	99.00
100	100" DIA. WATER LINE	1	LINEAL FEET	100.00	100.00

THIS IS NOT A BIDDING AND IS NOT TO BE USED TO CONVEY OR ESTABLISH INTERESTS IN REAL PROPERTY. This document is prepared by a professional engineer, architect, or other professional person and is not to be used for any purpose other than that for which it was prepared. It is not to be used for any purpose other than that for which it was prepared. It is not to be used for any purpose other than that for which it was prepared.



ABANDON NOTE

ABANDON EXISTING WATER LINE AFTER APPROVED BY CITY. REMOVE 24\"/>

KEY NOTES

- 1. PROPOSED EXISTING WATER LINE (SEE GENERAL NOTE 10)
- 2. MAINTAIN ACCESS AT ALL TIMES
- 3. EXISTING WATER LINE TO REMAIN
- 4. EXISTING WATER LINE TO REMAIN
- 5. EXISTING WATER LINE TO REMAIN
- 6. EXISTING WATER LINE TO REMAIN
- 7. EXISTING WATER LINE TO REMAIN
- 8. EXISTING WATER LINE TO REMAIN
- 9. EXISTING WATER LINE TO REMAIN
- 10. EXISTING WATER LINE TO REMAIN

NOTES:

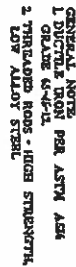
- 1. SEE GENERAL NOTE SHEET 001 FOR ALL NOTES
- 2. SEE GENERAL NOTE SHEET 001 FOR ALL NOTES
- 3. SEE GENERAL NOTE SHEET 001 FOR ALL NOTES
- 4. SEE GENERAL NOTE SHEET 001 FOR ALL NOTES
- 5. SEE GENERAL NOTE SHEET 001 FOR ALL NOTES
- 6. SEE GENERAL NOTE SHEET 001 FOR ALL NOTES
- 7. SEE GENERAL NOTE SHEET 001 FOR ALL NOTES
- 8. SEE GENERAL NOTE SHEET 001 FOR ALL NOTES
- 9. SEE GENERAL NOTE SHEET 001 FOR ALL NOTES
- 10. SEE GENERAL NOTE SHEET 001 FOR ALL NOTES

LEGEND

- 1. 12\"/>

THIS SHEET PHASE 1

Sheet W07	PROJECT = E0322000 WATER PLAN SHEET 04 QUAIL RUN - SAN MARCOS PROPOSED WATER LINE	CITY OF San Marcos TEXAS		Date: 10/1/2009 Drawn by: [blank] Checked by: [blank] Scale: AS SHOWN	NOT FOR CONSTRUCTION This document is released for REVIEW, under the authority of TEXAS A. COM. P.E. # 76574 on 10/1/2009
-----------	--	---------------------------------------	--	--	--



**PIPE RESTRAINT
PVC BELL JOINTS**

COMBINATION AIR RELEASE VALVE SCHEDULE

Address: **ALBANY WEBSTER SERVICES SCHOOL**



H ROADWAY BORE & ENCASEMENT



INSTALL AT ALL APPOINTMENTS (NSP)

Sheet 002 PROJECT * E0322000
STANDARD WATER DETAILS 2
QUAIL RUN - SAN MARCOS
PROPOSED WATER LINE

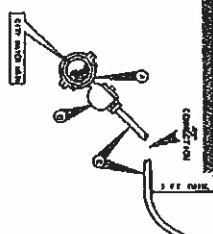
CITY OF
San Marcos
TEXAS

25

Date: 10/1/2009
Designed by: TC
Drawn by: JC
Checked by: TC
Scale:
AS SHOWN

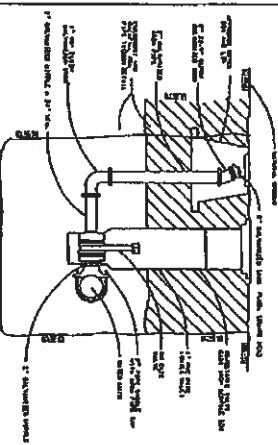
NOT FOR CONSTRUCTION
This document is released for
REVIEW, under the authority
of TERRY L. COHN, P.C. # 76574
on 10/1/2009.

This diagram shows the exploded view of a 1000W electric kettle. The components are numbered as follows: 1. Upper body, 2. Upper cover, 3. Upper cover gasket, 4. Upper cover screw, 5. Upper cover hinge, 6. Upper cover hinge pin, 7. Upper cover hinge pin bush, 8. Upper cover hinge pin nut, 9. Upper cover hinge pin washer, 10. Upper cover hinge pin lock washer.



1. DISINFECTION SAMPLE PORT

APPROVED BY: _____
DATE: _____



BLOW-OFF ASSEMBLY:

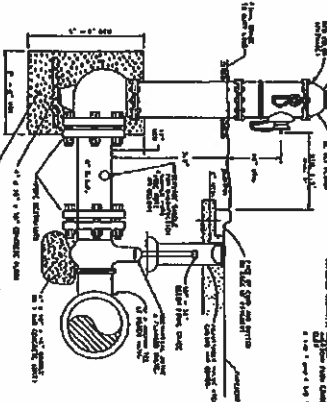
44 Irving Ave., P.O.
Brooklyn 1, N.Y. 11201

Site	Criteria	Species at Present or Dispersal Point	Habitat and Description	Notes
11-16-1003	227	Western Yellowthroat	In middle of forest edge forest	1
11-16-1003	180	SP. Thrush, Yellow Red		1
11-16-1003	171	Western Yellowthroat		1
11-16-1003	170	Western Yellowthroat		1
11-16-1003	169	Western Yellowthroat		1
11-16-1003	168	Western Yellowthroat		1
11-16-1003	167	SP. Thrush, Yellow Red		1
11-16-1003	166	SP. Thrush, Yellow Red		1
11-16-1003	165	SP. Thrush, Yellow Red		1
11-16-1003	164	SP. Thrush, Yellow Red		1
11-16-1003	163	SP. Thrush, Yellow Red		1
11-16-1003	162	SP. Thrush, Yellow Red		1
11-16-1003	161	SP. Thrush, Yellow Red		1
11-16-1003	160	SP. Thrush, Yellow Red		1
11-16-1003	159	SP. Thrush, Yellow Red		1
11-16-1003	158	SP. Thrush, Yellow Red		1
11-16-1003	157	SP. Thrush, Yellow Red		1
11-16-1003	156	SP. Thrush, Yellow Red		1
11-16-1003	155	SP. Thrush, Yellow Red		1
11-16-1003	154	SP. Thrush, Yellow Red		1
11-16-1003	153	SP. Thrush, Yellow Red		1
11-16-1003	152	SP. Thrush, Yellow Red		1
11-16-1003	151	SP. Thrush, Yellow Red		1
11-16-1003	150	SP. Thrush, Yellow Red		1
11-16-1003	149	SP. Thrush, Yellow Red		1
11-16-1003	148	SP. Thrush, Yellow Red		1
11-16-1003	147	SP. Thrush, Yellow Red		1
11-16-1003	146	SP. Thrush, Yellow Red		1
11-16-1003	145	SP. Thrush, Yellow Red		1
11-16-1003	144	SP. Thrush, Yellow Red		1
11-16-1003	143	SP. Thrush, Yellow Red		1
11-16-1003	142	SP. Thrush, Yellow Red		1
11-16-1003	141	SP. Thrush, Yellow Red		1
11-16-1003	140	SP. Thrush, Yellow Red		1
11-16-1003	139	SP. Thrush, Yellow Red		1
11-16-1003	138	SP. Thrush, Yellow Red		1
11-16-1003	137	SP. Thrush, Yellow Red		1
11-16-1003	136	SP. Thrush, Yellow Red		1
11-16-1003	135	SP. Thrush, Yellow Red		1
11-16-1003	134	SP. Thrush, Yellow Red		1
11-16-1003	133	SP. Thrush, Yellow Red		1
11-16-1003	132	SP. Thrush, Yellow Red		1
11-16-1003	131	SP. Thrush, Yellow Red		1
11-16-1003	130	SP. Thrush, Yellow Red		1
11-16-1003	129	SP. Thrush, Yellow Red		1
11-16-1003	128	SP. Thrush, Yellow Red		1
11-16-1003	127	SP. Thrush, Yellow Red		1
11-16-1003	126	SP. Thrush, Yellow Red		1
11-16-1003	125	SP. Thrush, Yellow Red		1
11-16-1003	124	SP. Thrush, Yellow Red		1
11-16-1003	123	SP. Thrush, Yellow Red		1
11-16-1003	122	SP. Thrush, Yellow Red		1
11-16-1003	121	SP. Thrush, Yellow Red		1
11-16-1003	120	SP. Thrush, Yellow Red		1
11-16-1003	119	SP. Thrush, Yellow Red		1
11-16-1003	118	SP. Thrush, Yellow Red		1
11-16-1003	117	SP. Thrush, Yellow Red		1
11-16-1003	116	SP. Thrush, Yellow Red		1
11-16-1003	115	SP. Thrush, Yellow Red		1
11-16-1003	114	SP. Thrush, Yellow Red		1
11-16-1003	113	SP. Thrush, Yellow Red		1
11-16-1003	112	SP. Thrush, Yellow Red		1
11-16-1003	111	SP. Thrush, Yellow Red		1
11-16-1003	110	SP. Thrush, Yellow Red		1
11-16-1003	109	SP. Thrush, Yellow Red		1
11-16-1003	108	SP. Thrush, Yellow Red		1
11-16-1003	107	SP. Thrush, Yellow Red		1
11-16-1003	106	SP. Thrush, Yellow Red		1
11-16-1003	105	SP. Thrush, Yellow Red		1
11-16-1003	104	SP. Thrush, Yellow Red		1
11-16-1003	103	SP. Thrush, Yellow Red		1
11-16-1003	102	SP. Thrush, Yellow Red		1
11-16-1003	101	SP. Thrush, Yellow Red		1
11-16-1003	100	SP. Thrush, Yellow Red		1
11-16-1003	99	SP. Thrush, Yellow Red		1
11-16-1003	98	SP. Thrush, Yellow Red		1
11-16-1003	97	SP. Thrush, Yellow Red		1
11-16-1003	96	SP. Thrush, Yellow Red		1
11-16-1003	95	SP. Thrush, Yellow Red		1
11-16-1003	94			

Fire Hydrant / Flush Hydrant Schedule

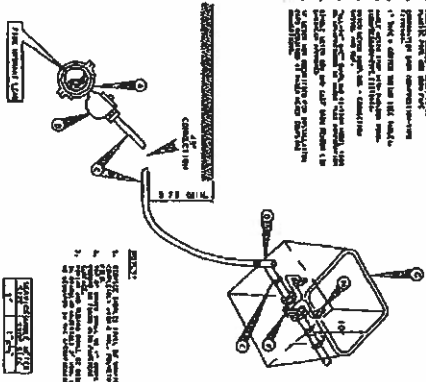
[illegible]

Table 1



N
FOR FIRE HYDRANT

UNIVERSITY MICROFILMS INTL. SER. 1-47-80
SERIALS ACQUISITION DEPT. 300 N. ZEEB RD.
ANN ARBOR MI 48106



FOR FIRE HYDRANT

DAVID'S TAILLOR-0153469000 PM, DM

NOT FOR CONSTRUCTION
This document is released for
REVIEW, under the authority
of TERRI L. CONN, P.E. # 7637
on 11/11/2009

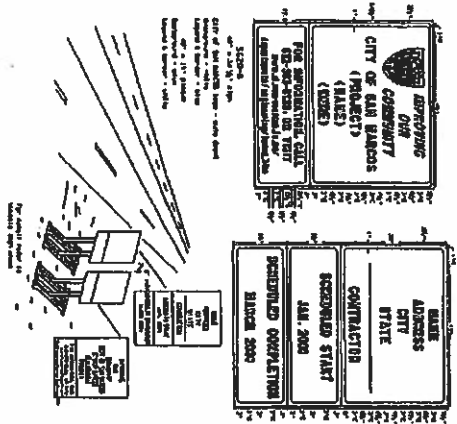
C. MES 115 137	Date: 10/1/2009
	Designed by: TC
	Drawn by: JCO
	Checked by: TC
	Scales

WEN DUNN
FALLS CHURCH, VIRGINIA
17100 CH 10 WEST, SUITE
200, FALLS CHURCH, TEXAS 77638
TEL: (214) 911-7777
FAX: (214) 911-7114
AEGIS BATHS 272-3141

CITY OF
San Marcos
TEXAS

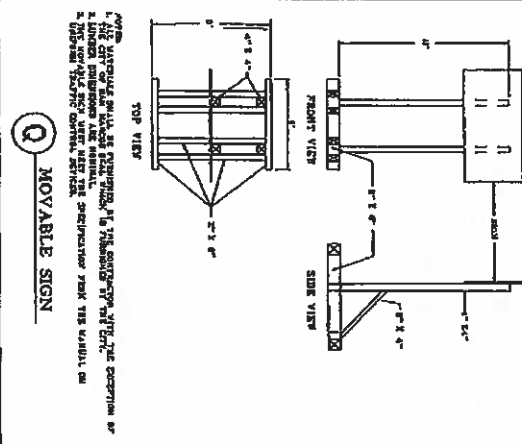
PROJECT # E0322000
STANDARD WATER DETAILS 3
QUAIL RUN - SAN MARCOS
PROPOSED WATER LINE

Sheet 003



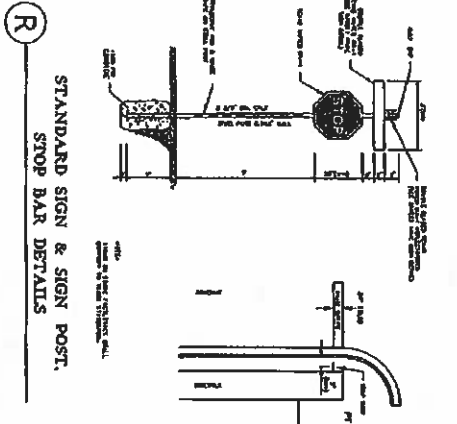
P INFORMATION SIGNS

The City of San Marcos
STANDARD DETAIL
SHEET 004



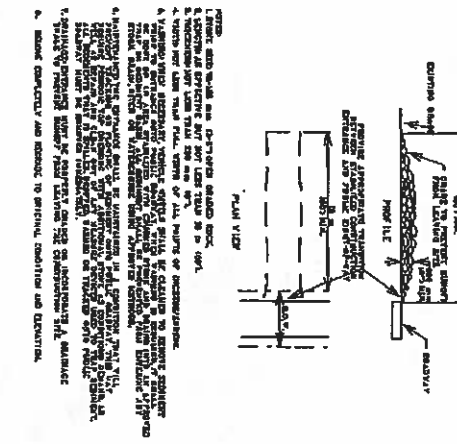
Q MOVABLE SIGN

The City of San Marcos
STANDARD DETAIL
SHEET 004



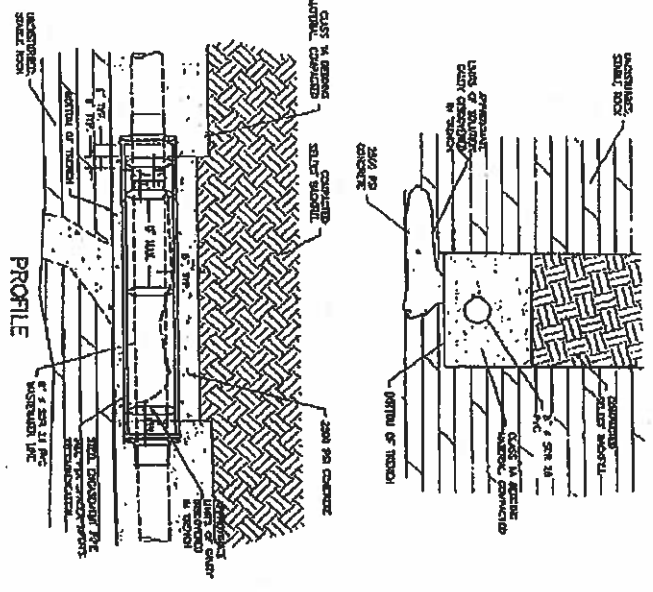
**R STANDARD SIGN & SIGN POST
STOP BAR DETAILS**

The City of San Marcos
STANDARD DETAIL
SHEET 004



S STANDARDIZED CONSTRUCTION ENTRANCE

The City of San Marcos
STANDARD DETAIL
SHEET 004



SECTION

PROFILE

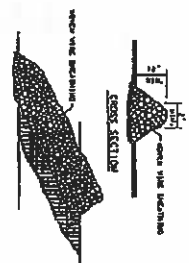
Feature Fill Notes:
Selection of method to fill, protect, span, and/or address the feature will be made after coordination with TCEQ. The encasement method will be paid for, if required, by extending unit pricing for open cut casing installation in increments of 10 feet. Payment for filling of manholes to the finish of the trench line will be considered paid for as part of the required backfill. Rebars of clean gravel, stones and acceptable rock fill material from the project may be placed in holes using the best size and material selection required to achieve closure with the final concrete fill shown on the detail.

Sheet 004	PROJECT = E0322000 STANDARD PROJECT DETAILS QUAIL RUN - SAN MARCOS PROPOSED WATER LINE	CITY OF San Marcos TEXAS	GEC GEC CONSULTING, INC. 10000 N. LBJ Fwy, Suite 100 Dallas, TX 75243 (214) 343-1000 www.gecinc.com	Designed by: JEC Drawn by: JEC Checked by: JEC Scale: AS SHOWN	NOT FOR CONSTRUCTION This document is released for REVIEW, under the authority of T&E L. COOK, P.E. - 16514 on 10/1/2009
-----------	---	--------------------------------	--	---	--

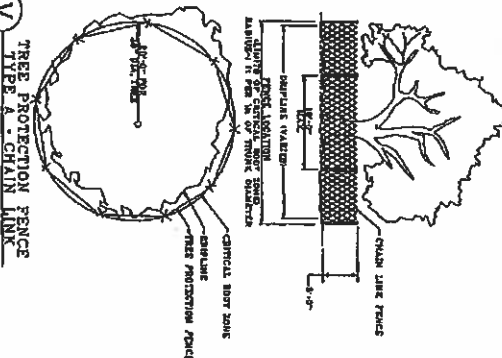
[illegible]

T SILT FENCE

ROCK BERM DETAIL



1. THE ABOVE SAID SUBJECT IS INTERESTED ABOUT THE ABOVE SAID MATTER AND HAS REQUESTED THAT THE MATTER BE REOPENED AND RECONSIDERED.
2. THE ABOVE SAID SUBJECT HAS REQUESTED THAT THE MATTER BE REOPENED AND RECONSIDERED.
3. THE ABOVE SAID SUBJECT HAS REQUESTED THAT THE MATTER BE REOPENED AND RECONSIDERED.
4. THE ABOVE SAID SUBJECT HAS REQUESTED THAT THE MATTER BE REOPENED AND RECONSIDERED.
5. THE ABOVE SAID SUBJECT HAS REQUESTED THAT THE MATTER BE REOPENED AND RECONSIDERED.
6. THE ABOVE SAID SUBJECT HAS REQUESTED THAT THE MATTER BE REOPENED AND RECONSIDERED.
7. THE ABOVE SAID SUBJECT HAS REQUESTED THAT THE MATTER BE REOPENED AND RECONSIDERED.
8. THE ABOVE SAID SUBJECT HAS REQUESTED THAT THE MATTER BE REOPENED AND RECONSIDERED.
9. THE ABOVE SAID SUBJECT HAS REQUESTED THAT THE MATTER BE REOPENED AND RECONSIDERED.
10. THE ABOVE SAID SUBJECT HAS REQUESTED THAT THE MATTER BE REOPENED AND RECONSIDERED.



TYPE A - CHAIN LINK

<p><i>The City of San Marcos</i> DEPARTMENT OF ENVIRONMENT & CONSERVATION STANDARD DETAIL N.T.S.</p>	<p>APPROVED BY:</p>
<p>SIGNED: <i>WILLIAM F. E. MILLER</i>, DIRECTOR DATED: NOVEMBER TWENTY-NINE, 1964</p>	

[illegible]

Sheet D05 PROJECT - E0322000
EROSION AND SEDIMENT CONTROL
NOTES AND DETAILS
QUAIL RUN - SAN MARCOS
PROPOSED WATER LINE

CITY OF
San Marcos
TEXAS

DEC DON SUBMER, INC.
FAX: (916) 841-8909
11501 18 18 WEST, SUITE 21
SAN ANTONIO, TEXAS 78716-7027
TEL: (916) 841-8908
FAX: (916) 841-8909
30303 AUSTIN ST-3011

Date: 10/1/2009
Designed by: TC
Drawn by: JG
Checked by: TC
Scale:
AS SHOWN

NOT FOR CONSTRUCTION
This document is released for
REVIEW, under the authority
of TERRY L. LOHW, P.E. # 7652
on 10/11/2002.

Agenda Item Request Form

Hays County Commissioners' Court

9:00 a.m. Every Tuesday

Request forms are due in the County Judge's Office

no later than 2:00 p.m. on WEDNESDAY.

Phone (512) 393-2205 Fax (512) 393-2282

AGENDA ITEM: Approve the June 2009 Amended, July 2009 and August 2009 Treasurer's Reports and Investment Reports

TYPE OF ITEM: ~~CONSENT~~-ACTION-PROCLAMATION-EXECUTIVE SESSION-WORKSHOP

PREFERRED MEETING DATE REQUESTED: 11/24/09

AMOUNT REQUIRED: N/A

LINE ITEM NUMBER OF FUNDS REQUIRED: N/A

REQUESTED BY: Michele Tuttle, Hays County Treasurer

SPONSORED BY: Liz Sumter, County Judge

SUMMARY:

Approve the June 2009 Amended Treasurer's Report noting the highlighted changes. Approve the July 2009 and August 2009 Treasurer's Reports

HAYS COUNTY TREASURER'S REPORT

AMENDED FOR THE MONTH OF JUNE 2009

CHECKBOOK

OPERATING FUNDS:

	BEGINNING BALANCE	Interest	Revenues	Deposits From Investments	Disbursements	Transfer to Investments	ENDING BALANCE	Total Investments	TOTAL FUND
General	\$ 52,056.53	\$ 72.96	\$ 1,521,738.10	\$ 3,743,900.00	\$ 4,984,277.73	\$ -	\$ 333,492.88	\$ 25,317,955.63	\$ 25,347,528.31
Road and Bridge General	\$ 18.27	\$ 43.83	\$ 609,467.57	\$ 246,756.27	\$ 752,321.10	\$ -	\$ 65,864.54	\$ 7,683,232.26	\$ 7,747,196.90
Medical and Dental Fund	\$ 466.53	\$ 1.48	\$ 601,427.17	\$ -	\$ 691,882.70	\$ -	\$ 2.49	\$ 53,294.51	\$ 53,297.00
Sheriff's Drug Forfeiture	\$ 4,735.92	\$ -	\$ -	\$ -	\$ -	\$ -	\$ 4,735.92	\$ 53,299.24	\$ 57,975.16
District Attorney Drug Forfeiture	\$ 2,029.89	\$ -	\$ -	\$ -	\$ -	\$ -	\$ 2,029.89	\$ 3,111.67	\$ 5,141.68
Health Services Grants	\$ 1,465.42	\$ 6.32	\$ 104,676.70	\$ -	\$ 102,777.01	\$ -	\$ 3,673.43	\$ 39.33	\$ 3,712.76
Family Health Services	\$ 1,038.79	\$ 3.15	\$ 81,184.37	\$ -	\$ 79,231.20	\$ -	\$ 7,003.11	\$ 20.08	\$ 7,023.19
Juvenile Detention Center	\$ 8,887.22	\$ 26.05	\$ 562,773.13	\$ 500,000.00	\$ 750,548.78	\$ -	\$ 320,938.22	\$ 14,160.48	\$ 335,118.70
Tobacco Settlement Fund	\$ 170,418.50	\$ -	\$ -	\$ -	\$ -	\$ -	\$ 170,418.50	\$ 429,586.28	\$ 599,804.73
Historical Commission Trust Fund	\$ 311.00	\$ -	\$ 70.00	\$ 1,335.80	\$ 1,716.80	\$ -	\$ -	\$ 18,973.57	\$ 18,973.57

CONSTRUCTION FUNDS:

Certificates of Obligation 1997	\$ 0.01	\$ -	\$ -	\$ -	\$ -	\$ -	\$ 0.01	\$ -	\$ 0.01
Certificates of Obligation 2005	\$ 1.00	\$ -	\$ -	\$ 8,593.16	\$ 6,394.16	\$ -	\$ -	\$ 2,197.34	\$ 2,197.34
Road Construction Bond 2006	\$ 1.00	\$ -	\$ -	\$ 18,426.31	\$ 18,426.31	\$ -	\$ 1.00	\$ 3,824,025.36	\$ 3,824,027.36
Parish Bond 2007	\$ 1.00	\$ -	\$ -	\$ 298,039.83	\$ 298,039.83	\$ -	\$ 1.00	\$ 4,435,733.26	\$ 4,435,734.26
Parish Bond 2008	\$ -	\$ -	\$ -	\$ 18,813.71	\$ 18,813.71	\$ -	\$ 1.00	\$ 7,502,828.18	\$ 7,502,828.18
TCDP Disaster Relief Blanco	\$ -	\$ -	\$ -	\$ -	\$ -	\$ -	\$ -	\$ -	\$ -
LCRA Service Fee Fund	\$ 578.19	\$ -	\$ 4,000.00	\$ 5,423.81	\$ 10,000.00	\$ -	\$ 0.00	\$ 400,929.00	\$ 400,929.00
Cedar Oaks Mesa	\$ 15,000.00	\$ -	\$ 4,000.00	\$ -	\$ 9,500.00	\$ -	\$ 9,500.00	\$ -	\$ 9,500.00

INTEREST AND ENDING FUNDS:

Hays County I & S	\$ 116,142.96	\$ 29.46	\$ -	\$ -	\$ 100.00	\$ -	\$ 116,072.41	\$ 7,642,765.96	\$ 7,758,228.40
GRAND TOTALS:	\$ 372,938.33	\$ 164.67	\$ 3,579,650.04	\$ 4,559,282.09	\$ 7,760,231.53	\$ -	\$ 1,031,834.90	\$ 57,077,583.04	\$ 58,109,217.84

Transfers Outstanding:

Hays County Treasurer's Investment Report

For June 2009

PAGE 1

AMERICAN NATIONAL BANK CHECKING				
Description	5/31/09 Balance	Interest	Deposits	Debits
All Funds (see Page 1)	\$ 372,939.33	194.57	8,418,942.13	7,780,231.53
				1,031,834.00
				930,095 Balance

TEXPOOL				
	0.3939%			
Description	5/31/09 Balance	Interest	Deposits	Debits
General	\$ 11,943,997.72	3,774.66	381,974.27	3,743,900.00
Road and Bridge General	\$ 5,099,970.94	1,975.87	82,024.29	246,788.27
Medical and Dental Fund	\$ 51,894.06	18.82	-	-
Sheriff's Drug Forfeiture	\$ 53,222.02	17.22	-	-
D.A. Drug Forfeiture	\$ 3,048.48	0.86	-	-
Health Services Grants	\$ 2.91	-	-	-
Juvenile Center	\$ 514,023.21	157.27	-	500,300.00
Tobacco Settlement Fund	\$ 429,247.28	138.97	-	-
Historical Commission Trust	\$ 13,119.32	4.18	-	1,338.30
Certificates of Obligation '05	\$ 6,992.95	0.52	2,197.03	6,883.18
Road Construction 2008	\$ 3,841,212.98	1,242.90	-	18,429.51
Parks Bond 2007	\$ 4,732,250.12	1,922.99	-	298,039.83
Parks Bond 2008	\$ 7,518,208.54	2,438.35	-	18,613.71
LCRA Service Fee Fund	\$ 406,221.88	131.15	-	5,423.61
Hays County I & S	\$ 5,396,338.69	1,780.85	88,254.64	-
All Funds	41,010,295.83	13,177.47	534,450.23	4,830,202.09
				36,718,621.44
ICT Funds Management				
	0.2200%			
Description	5/31/09 Balance	Interest	Deposits	Debits
General	\$ 11,240,826.63	2,309.04	-	-
				930,095 Balance
				11,243,135.57

CLASS - MBIA				
	0.4000%	NAV 1.00		
Description	5/31/09 Balance	Interest	Deposits	Debits
General	\$ 3,751,737.96	1,238.45	-	-
				930,095 Balance
				3,752,978.43

LOGIC	0.5345%	1.00061			
Balance					
General	93159 Balance	Interest	Deposits	Debits	Balance
Road and Bridge General	\$ 497,336.16	218.48	-	-	497,554.64
Medical and Dental Fund	\$ 1,745,910.71	766.72	-	-	1,746,677.43
D.A. Drug Forfeiture	\$ 1,383.03	0.61	-	-	1,383.64
Health Services Grants	\$ 62.21	0.03	-	-	62.24
Family Health Services	\$ 36.40	0.02	-	-	36.42
Historical Commission Trust	\$ 20.07	0.01	-	-	20.08
Hayes County I & S	\$ 7,165.83	3.16	-	-	7,168.99
	\$ 1,925,043.84	945.88	-	-	1,925,989.72
All Funds	4,176,378.05	1,834.71	-	-	4,178,212.76

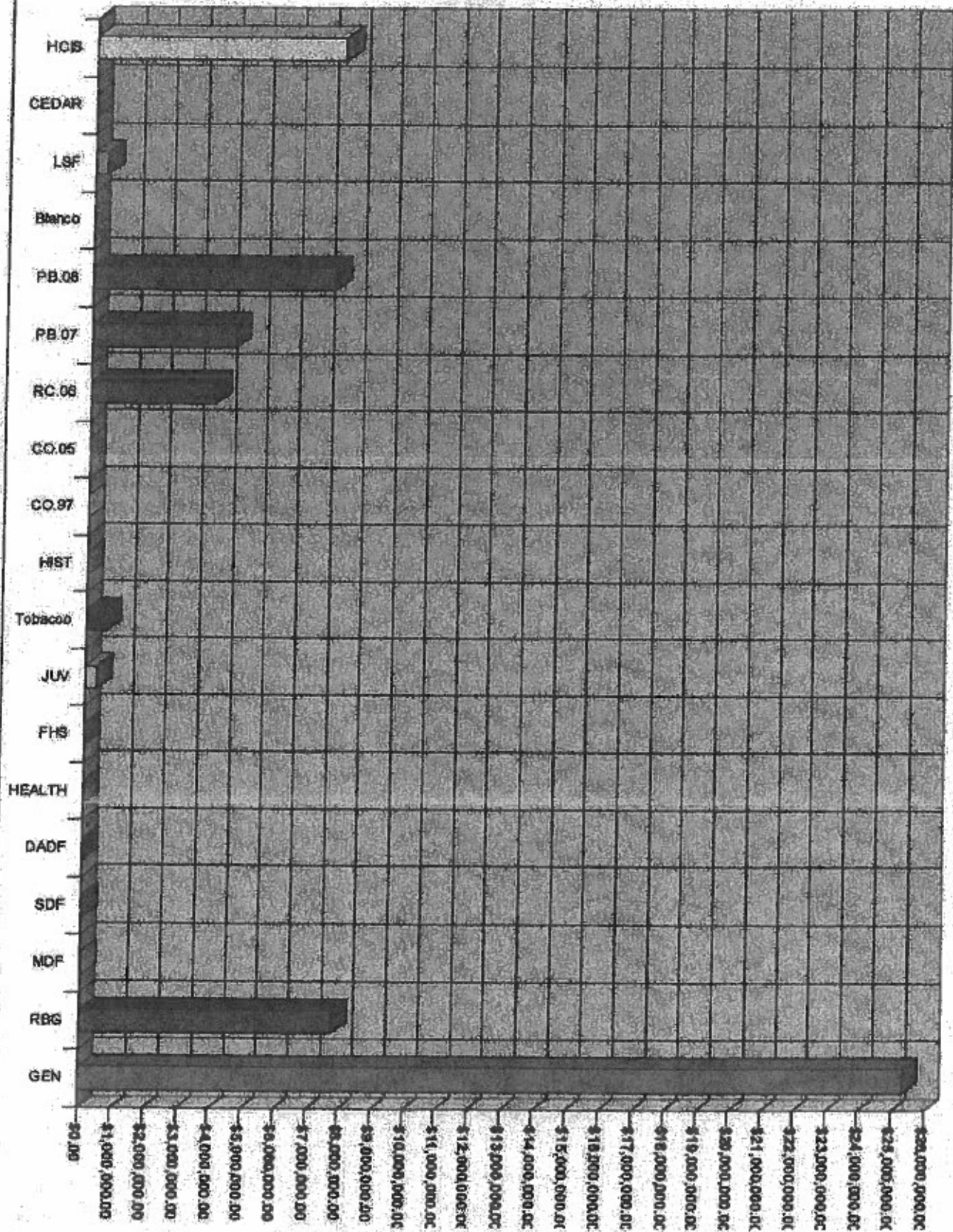
TREASURY BILLS AND NOTES

Description	Price	Yield	Maturity	Par Value	Book Value	Market Value	Par Value	Book Value	Market Value
9127945079	98.3252	2.0245%	04/04/09	200,000.00	195,856.44	195,857.33	200,000.00	195,856.44	195,857.33
9127945081	98.3439	2.0245%	04/04/09	200,000.00	195,856.44	195,857.33	200,000.00	195,856.44	195,857.33
9127945083	98.3459	2.0245%	04/04/09	200,000.00	195,856.44	195,857.33	200,000.00	195,856.44	195,857.33
9127945085	98.3459	2.0245%	04/04/09	200,000.00	195,856.44	195,857.33	200,000.00	195,856.44	195,857.33
9127945087	98.3459	2.0245%	04/04/09	200,000.00	195,856.44	195,857.33	200,000.00	195,856.44	195,857.33
9127945089	98.3459	2.0245%	04/04/09	200,000.00	195,856.44	195,857.33	200,000.00	195,856.44	195,857.33
TOTAL				1,050,000.00	1,049,556.27	1,049,556.47	1,050,000.00	1,049,556.27	1,049,556.47

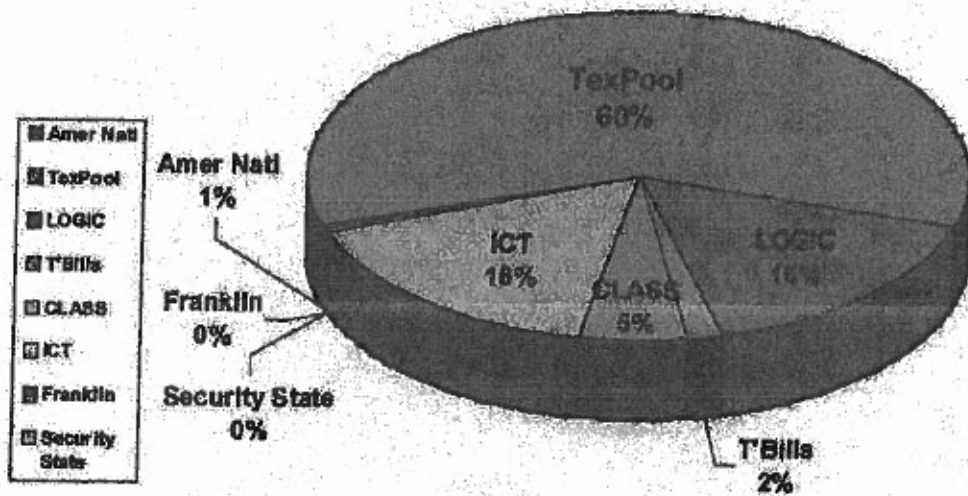
LINKED DEPOSIT PROGRAM CERTIFICATES OF DEPOSITS

Description	Fund	Yield	Maturity	Par Value	Book Value	Market Value	Par Value	Book Value	Market Value
Security State Bank	General	2.72%	11/7/09	4,022.27	4,022.27	4,022.27	4,022.27	4,022.27	4,022.27
Security State Bank	General	3.06%	07/4/10	13,888.22	13,888.22	13,888.22	13,888.22	13,888.22	13,888.22
Security State Bank	General	3.14%	6/14/12	21,030.03	21,030.03	21,030.03	21,030.03	21,030.03	21,030.03
Security State Bank	General	2.94%	7/10/10	16,721.09	16,721.09	16,721.09	16,721.09	16,721.09	16,721.09
Security State Bank	General	2.99%	7/10/12	12,626.06	12,626.06	12,626.06	12,626.06	12,626.06	12,626.06
Security State Bank	General	2.58%	1/4/13	9,168.58	9,168.58	9,168.58	9,168.58	9,168.58	9,168.58
Security State Bank	General	2.98%	1/4/13	13,813.14	13,813.14	13,813.14	13,813.14	13,813.14	13,813.14
Security State Bank	General	2.99%	1/4/13	11,230.35	11,230.35	11,230.35	11,230.35	11,230.35	11,230.35
Security State Bank	General	2.99%	1/4/13	14,065.75	14,065.75	14,065.75	14,065.75	14,065.75	14,065.75
Franklin Bank	General	2.04%	8/2/12	31,208.58	31,208.58	31,208.58	31,208.58	31,208.58	31,208.58
Franklin Bank	General	1.91%	10/15/11	7,928.71	7,928.71	7,928.71	7,928.71	7,928.71	7,928.71
TOTAL				155,501.80	155,501.80	155,501.80	155,501.80	155,501.80	155,501.80
TOTAL Fund Balances				61,737,227.79					
BENCHMARK									
CURRENT 90 DAY TREASURY BILL YIELDING .126%									

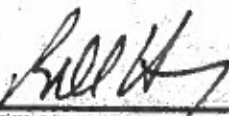
Fund balances for 6/30/09

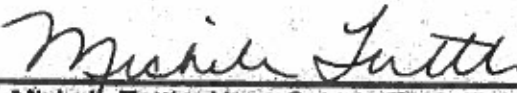


INVESTMENT ALLOCATION TOTALS JUNE 2009



All maturity dates are less than 180 days. The Treasurer's Office invests with prudence to keep security and liquidity as the primary goals. The strategy used for each fund is based on the terms described in the Hays County Investment Policy. The Treasurer's Office strictly adheres to all laws and statutes concerning the investment of public funds.


Bill Herzog, Hays County Auditor


Michele Tuttle, Hays County Treasurer


Britney Richey, Accountant, Hays County

HAYS COUNTY TREASURER'S REPORT

FOR THE MONTH OF JULY 2009

CHECKING

OPERATING FUNDS:

	BEGINNING BALANCE	Interest	Revenues	Deposits From Investments	Disbursements	Transfer to Investments	ENDING BALANCE	Total Investments	TOTAL FUND
General	\$ 333,482.68	\$ 178.45	\$ 2,887,184.00	\$ 1,230,000.00	\$ 4,370,073.86	\$ -	\$ 90,782.47	\$ 24,983,787.08	\$ 24,174,379.83
Road and Bridge General	\$ 83,964.84	\$ 19.75	\$ 163,889.78	\$ 1,217,823.87	\$ 1,403,494.57	\$ -	\$ 41,873.25	\$ 8,529,898.95	\$ 6,571,872.10
Medical and Dental Fund	\$ 2.49	\$ -	\$ 580,431.73	\$ -	\$ 580,433.22	\$ -	\$ 1.00	\$ 83,306.97	\$ 83,310.87
Street's Drug Forfeiture	\$ 4,735.82	\$ -	\$ -	\$ -	\$ -	\$ 4,734.32	\$ 1.00	\$ 57,989.51	\$ 57,990.51
District Attorney Drug Forfeiture	\$ 2,028.98	\$ -	\$ 2,854.89	\$ -	\$ -	\$ 4,363.88	\$ 1.00	\$ 7,896.33	\$ 7,897.33
Hot Check Fee Fund	\$ 7,427.16	\$ -	\$ 2,831.13	\$ -	\$ 1,728.19	\$ -	\$ 8,532.89	\$ -	\$ 8,532.89
Health Services Grants	\$ 3,873.43	\$ 7.98	\$ 477,185.22	\$ -	\$ 478,900.67	\$ -	\$ 8,968.98	\$ 38.34	\$ 7,006.33
Family Health Services	\$ 7,003.11	\$ 4.78	\$ 56,788.11	\$ -	\$ 30,987.01	\$ -	\$ 31,808.98	\$ 20.09	\$ 31,829.09
Juvenile Detention Center	\$ 320,638.22	\$ 46.82	\$ 300,286.74	\$ -	\$ 464,975.52	\$ -	\$ 188,308.06	\$ 14,184.89	\$ 170,490.82
Tobacco Settlement Fund	\$ 170,418.50	\$ -	\$ -	\$ -	\$ -	\$ 170,417.60	\$ 1.00	\$ 589,628.83	\$ 589,629.83
Historical Commemorative Trust Fund	\$ -	\$ -	\$ 370.00	\$ -	\$ -	\$ 228.30	\$ 141.00	\$ 19,208.81	\$ 19,349.91

CONSTRUCTION FUNDS:

Certificates of Obligation 1987	\$ 0.01	\$ -	\$ -	\$ -	\$ -	\$ -	\$ 0.01	\$ -	\$ 0.01
Certificates of Obligation 2006	\$ -	\$ -	\$ -	\$ -	\$ -	\$ -	\$ -	\$ 2,187.87	\$ 2,187.87
Road Construction Bond 2006	\$ 1.00	\$ -	\$ -	\$ 457,887.01	\$ 467,887.01	\$ -	\$ 1.00	\$ 3,387,102.01	\$ 3,387,103.01
Parla Bond 2007	\$ 1.00	\$ -	\$ -	\$ 223,142.38	\$ 223,142.38	\$ -	\$ 1.00	\$ 4,213,889.51	\$ 4,213,890.51
Parla Bond 2008	\$ 1.00	\$ -	\$ -	\$ 1,820.00	\$ 1,820.00	\$ -	\$ 1.00	\$ 7,503,084.84	\$ 7,503,085.84
TCOP Disaster Relief Blanco	\$ -	\$ -	\$ -	\$ -	\$ -	\$ -	\$ -	\$ -	\$ -
LCRA Service Fee Fund	\$ 0.00	\$ -	\$ -	\$ 2,038.48	\$ 2,038.48	\$ -	\$ 1.00	\$ 389,207.74	\$ 389,208.74
Cedar Oaks Mesa	\$ 6,500.00	\$ -	\$ -	\$ -	\$ -	\$ -	\$ 9,500.00	\$ -	\$ 9,500.00

INTEREST AND SINKING FUNDS:

Hays County / & S	\$ 118,072.41	\$ 29.57	\$ 37,568.89	\$ -	\$ 153,870.19	\$ -	\$ 30.57	\$ 7,838,188.42	\$ 7,838,188.99
GRAND TOTALS:	\$ 1,059,261.75	\$ 288.18	\$ 4,486,110.07	\$ 3,152,719.82	\$ 8,144,386.86	\$ 178,985.10	\$ 349,088.40	\$ 64,880,553.76	\$ 65,038,812.18
Transfers Outstanding:									

Hays County Treasurer's Investment Report

For July 2009

PAGE 1

AMERICAN NATIONAL BANK CHECKING							
Description	Starting Balance	Interest	Payments	Debits		7/31/09 Balance	
All Funds (see Page 1)	\$ 1,039,261.75	208.15	7,630,829.58	\$ 324,321.09		346,058.40	
TEXPOOL							
	0.3394%	1,000490					
Description	Starting Balance	Interest	Payments	Debits		7/31/09 Balance	
General	\$ 8,565,646.84	2,507.35	293,753.22	1,230,000.00		7,032,103.24	
Road and Bridge General	\$ 5,997,154.83	1,533.69	52,167.11	1,217,823.67		4,783,201.96	
Medical and Dental Fund	\$ 91,910.87	14.91	-	-		91,925.78	
Sheriff's Drug Forfeiture	\$ 53,239.24	15.35	4,734.92	-		57,889.51	
D.A. Drug Forfeiture	\$ 3,049.43	0.98	4,583.08	-		7,634.07	
Health Services Grants	\$ 2.91	-	-	-		2.91	
Juvenile Center	\$ 14,180.48	4.08	-	-		14,184.56	
Tobacco Settlement Fund	\$ 429,306.23	125.10	170,417.90	-		599,828.93	
Historical Commission Trust	\$ 11,794.88	3.40	229.00	-		12,017.08	
Certificates of Obligation 05	\$ 2,157.34	0.93	-	-		2,197.97	
Road Construction 2009	\$ 3,624,036.35	1,072.67	-	457,997.01		3,367,102.01	
Parls Bond 2007	\$ 9,435,733.28	1,288.81	-	223,142.38		4,213,829.61	
Parls Bond 2008	\$ 7,502,828.18	2,156.45	-	1,820.00		7,083,064.63	
LCRA Service Fee Fund	\$ 400,829.00	115.20	-	2,036.46		398,907.74	
Hays County I & S	\$ 5,466,351.86	1,981.91	194,694.82	-		5,662,628.71	
All Funds	38,719,821.44	10,400.35	730,582.25	3,132,719.52		34,326,354.82	
ICT Funds Management							
	0.2100%						
Description	Starting Balance	Interest	Payments	Debits		7/31/09 Balance	
General	\$ 11,243,135.57	2,113.35	-	-		11,245,248.92	
CLASS - MBIA							
	0.3000%	NAV 1.00					
Description	Starting Balance	Interest	Payments	Debits		7/31/09 Balance	
General	\$ 3,732,978.43	1,211.73	-	-		3,734,189.16	

LOGIC	0.4646%	1.00039				
Description	9/30/00 Balance	Interest	Debits	9/30/00 Balance		
General	\$ 497,584.84	196.47		497,781.31		
Road and Bridge General	\$ 1,746,077.43	689.48		1,746,766.91		
Medical and Dental Fund	\$ 1,393.84	0.55		1,394.39		
D.A. Drug Forfeiture	\$ 62.24	0.02		62.26		
Health Services Grants	\$ 36.42	0.01		36.43		
Family Health Services	\$ 20.08	0.01		20.09		
Historical Commission Trust	\$ 7,185.98	2.84		7,188.82		
Hays County I & S	\$ 1,925,889.32	760.46		1,926,649.78		
All Funds	4,178,212.78	1,845.82		4,179,058.60		

TREASURY BILLS AND NOTES

Description	Folio	Yield/ Maturity	Balance 8/28/00	Pmt Value	Market Value	Purchases	Reductions	Pmt Value	Book Value	Market Value
9/12/00-9/14/01	94-9059	7.50% 7/22/00	245,914.53	245,914.53	245,914.53			245,914.53	245,914.53	245,914.53
9/12/00-9/14/01	94-9059	Hays County I & S	245,914.53	245,914.53	245,914.53			245,914.53	245,914.53	245,914.53
9/12/00-9/14/01	94-9059	7.50% 7/22/00	415,325.30	415,325.30	415,325.30			415,325.30	415,325.30	415,325.30
9/12/00-9/14/01	94-9059	General	415,325.30	415,325.30	415,325.30			415,325.30	415,325.30	415,325.30
9/12/00-9/14/01	94-9059	7.50% 7/22/00	100,000.00	100,000.00	100,000.00			100,000.00	100,000.00	100,000.00
9/12/00-9/14/01	94-9059	General	100,000.00	100,000.00	100,000.00			100,000.00	100,000.00	100,000.00
9/12/00-9/14/01	94-9059	7.50% 7/22/00	100,000.00	100,000.00	100,000.00			100,000.00	100,000.00	100,000.00
9/12/00-9/14/01	94-9059	General	100,000.00	100,000.00	100,000.00			100,000.00	100,000.00	100,000.00
9/12/00-9/14/01	94-9059	7.50% 7/22/00	100,000.00	100,000.00	100,000.00			100,000.00	100,000.00	100,000.00
9/12/00-9/14/01	94-9059	Hays County I & S	100,000.00	100,000.00	100,000.00			100,000.00	100,000.00	100,000.00
9/12/00-9/14/01	94-9059	General	100,000.00	100,000.00	100,000.00			100,000.00	100,000.00	100,000.00
TOTAL			1,049,824.00	1,049,824.00	1,049,824.00			1,049,824.00	1,049,824.00	1,049,824.00

LINKED DEPOSIT PROGRAM CERTIFICATES OF DEPOSITS

Description	Folio	Yield/ Maturity	Balance 8/28/00	Pmt Value	Market Value	Purchases	Reductions	Pmt Value	Book Value	Market Value
Security State Bank	General	2.72% 11/7/00	4,022.27	4,022.27	4,022.27			4,022.27	4,022.27	4,022.27
Security State Bank	General	3.00% 8/14/10	13,888.22	13,888.22	13,888.22			13,888.22	13,888.22	13,888.22
Security State Bank	General	3.14% 8/14/12	21,030.03	21,030.03	21,030.03			21,030.03	21,030.03	21,030.03
Security State Bank	General	2.94% 7/10/10	18,721.09	18,721.09	18,721.09			18,721.09	18,721.09	18,721.09
Security State Bank	General	2.89% 7/10/12	12,828.08	12,828.08	12,828.08			12,828.08	12,828.08	12,828.08
Security State Bank	General	2.86% 1/4/13	9,188.58	9,188.58	9,188.58			9,188.58	9,188.58	9,188.58
Security State Bank	General	2.89% 1/4/13	13,813.14	13,813.14	13,813.14			13,813.14	13,813.14	13,813.14
Security State Bank	General	2.89% 1/4/13	11,230.35	11,230.35	11,230.35			11,230.35	11,230.35	11,230.35
Security State Bank	General	2.89% 1/4/13	14,088.75	14,088.75	14,088.75			14,088.75	14,088.75	14,088.75
Franklin Bank	General	2.64% 8/8/12	30,481.18	30,481.18	30,481.18			30,481.18	30,481.18	30,481.18
Franklin Bank	General	1.91% 10/19/11	7,988.15	7,988.15	7,988.15			7,988.15	7,988.15	7,988.15
TOTAL			154,812.84	154,812.84	154,812.84			154,812.84	154,812.84	154,812.84

TOTAL Fund Balances

58,116,844.70

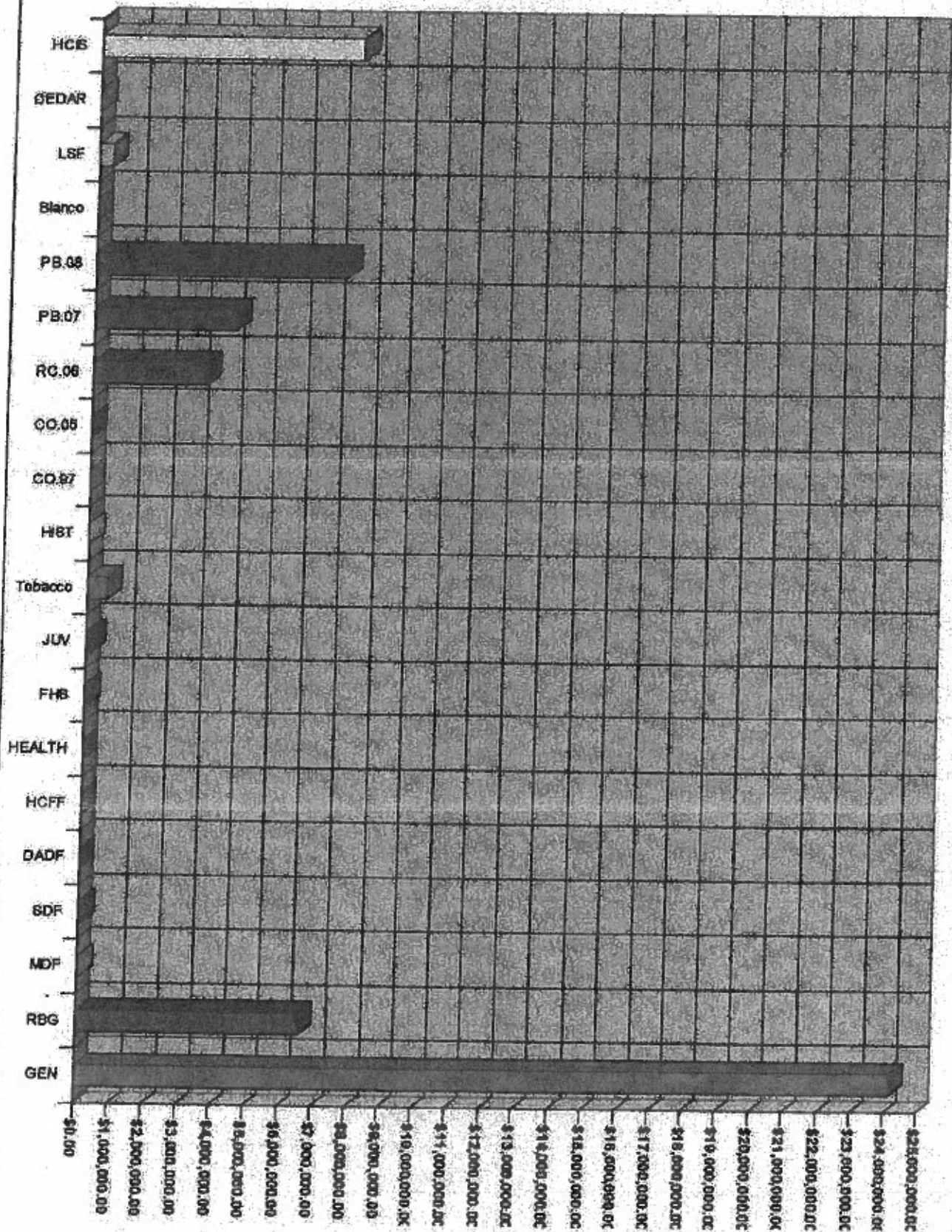
55,038,512.18

154,849.86

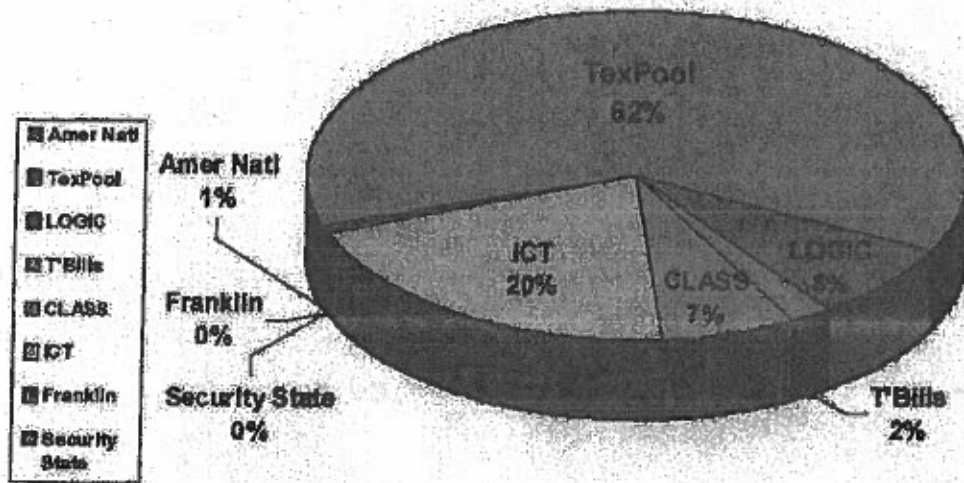
BENCHMARK

CURRENT 90 DAY TREASURY BILL YIELDING .175%

Fund balances for 7/3/09



INVESTMENT ALLOCATION TOTALS JULY 2009



All maturity dates are less than 180 days. The Treasurer's Office invests with prudence to keep security and liquidity as the primary goals. The strategy used for each fund is based on the terms described in the Hays County Investment Policy. The Treasurer's Office strictly adheres to all laws and statutes concerning the investment of public funds.

Bill Herzog

Bill Herzog, Hays County Auditor

Michele Tuttle

Michele Tuttle, Hays County Treasurer

Britney Richey

Britney Richey, Accountant, Hays County

HAYS COUNTY TREASURER'S REPORT FOR THE MONTH OF AUGUST 2009

CHECKING

OPERATING FUNDS:

	BEGINNING BALANCE	Interest	Revenues	Deposits From Investments	Disbursements	Transfer to Investments	ENDING BALANCE	Total Investments	TOTAL FUND
General	\$ 90,792.47	\$ 160.54	\$ 1,780,736.19	\$ 5,282,196.00	\$ 6,539,803.56	\$ -	\$ 694,000.25	\$ 19,008,080.79	\$ 19,802,870.95
Road and Bridge General	\$ 41,973.28	\$ 10.05	\$ 84,738.53	\$ 2,048,785.00	\$ 2,175,822.16	\$ -	\$ 17,886.48	\$ 4,512,888.12	\$ 4,530,464.80
Medical and Dental Fund	\$ 1.00	\$ -	\$ 0.87	\$ 475,928.54	\$ 475,928.54	\$ -	\$ 1.87	\$ 53,325.37	\$ 53,327.24
Sheriff's Drug Forfeiture	\$ 1.50	\$ -	\$ -	\$ 802.00	\$ 802.00	\$ -	\$ 1.00	\$ 87,404.11	\$ 87,405.11
District Attorney Drug Forfeiture	\$ 1.00	\$ -	\$ -	\$ -	\$ -	\$ -	\$ 1.00	\$ 7,088.36	\$ 7,089.58
Hot Check Fee Fund	\$ 8,532.09	\$ -	\$ 1,388.04	\$ -	\$ 3,468.61	\$ -	\$ 6,451.52	\$ -	\$ 8,481.82
Health Services Grants	\$ 6,965.96	\$ 1.20	\$ 82,825.89	\$ -	\$ 84,114.25	\$ -	\$ 6,678.79	\$ 39.35	\$ 5,718.05
Family Health Services	\$ 31,809.99	\$ 4.20	\$ 50,406.15	\$ -	\$ 82,835.16	\$ -	\$ 18,280.18	\$ 20.10	\$ 18,408.28
Juvenile Detention Center	\$ 156,306.08	\$ 32.28	\$ 437,488.26	\$ 14,000.00	\$ 451,841.92	\$ -	\$ 148,154.98	\$ 188.82	\$ 148,340.48
Tobacco Settlement Fund	\$ 1.00	\$ -	\$ -	\$ -	\$ -	\$ -	\$ 1.00	\$ 600,161.08	\$ 600,162.08
Historical Commission Trust Fund	\$ 141.00	\$ -	\$ 85.03	\$ -	\$ -	\$ -	\$ 206.00	\$ 18,214.84	\$ 18,420.84

CONSTRUCTION FUNDS:

Certificates of Obligation 1997	\$ 0.01	\$ -	\$ -	\$ -	\$ -	\$ -	\$ 0.01	\$ -	\$ 0.01
Certificates of Obligation 2005	\$ -	\$ -	\$ -	\$ -	\$ -	\$ -	\$ -	\$ 2,188.59	\$ 2,188.59
Road Construction Bond 2006	\$ 1.00	\$ -	\$ -	\$ -	\$ -	\$ -	\$ 1.00	\$ 3,358,089.87	\$ 3,358,089.87
Parish Bond 2007	\$ 1.00	\$ -	\$ -	\$ 2,800.00	\$ 2,800.00	\$ -	\$ 1.00	\$ 4,212,148.10	\$ 4,212,150.10
Parish Bond 2008	\$ 1.00	\$ -	\$ -	\$ -	\$ -	\$ -	\$ 1.00	\$ 7,805,218.73	\$ 7,805,218.73
TCDP Disaster Relief Blanket	\$ -	\$ -	\$ -	\$ -	\$ -	\$ -	\$ -	\$ -	\$ -
LCRA Service Fee Fund	\$ 1.00	\$ -	\$ -	\$ 20,250.00	\$ 20,250.00	\$ -	\$ 1.00	\$ 378,888.26	\$ 378,889.26
Cedar Oaks Mesa	\$ 9,500.00	\$ -	\$ -	\$ -	\$ 3,000.00	\$ -	\$ 6,500.00	\$ -	\$ 6,500.00

INTEREST AND SINKING FUNDS:

Hays County I & S	\$ 30.57	\$ 2.70	\$ 56,000.00	\$ 4,680,000.00	\$ 4,806,820.72	\$ -	\$ 28,212.64	\$ 2,982,767.28	\$ 3,021,989.92
GRAND TOTALS:	\$ 346,058.40	\$ 211.04	\$ 2,485,518.33	\$ 12,712,883.34	\$ 14,719,708.40	\$ -	\$ 825,315.31	\$ 42,718,888.68	\$ 43,544,285.96

Transfers Outstanding:

Hayes County Treasurer's Investment Report

PAGE 1

For August 2008

AMERICAN NATIONAL BANK CHECKING					
Description	7/31/08 Balance	Interest	Deposits	Debits	8/31/08 Balance
All Funds (see Page 1)	\$ 346,088.40	211.04	15,198,352.27	14,719,108.40	825,515.31
EXPOL					
	0.3380%	1,000.480			
Description	7/31/08 Balance	Interest	Deposits	Debits	8/31/08 Balance
General	\$ 7,552,109.24	1,864.46	182,253.09	5,282,188.03	2,574,022.76
Good and Bridge General	\$ 4,783,231.98	1,050.30	37,720.56	2,058,736.80	2,765,219.04
Medical and Dental Fund	\$ 51,928.78	14.92	-	-	51,943.70
Herb's Drug Fortifera	\$ 57,889.51	16.80	-	602.00	57,404.11
A. Drug Fortifera	\$ 7,834.07	2.21	-	-	7,836.28
Health Services Grants	\$ 2.91	-	-	-	2.91
Juvenile Center	\$ 14,184.56	1.26	-	14,000.00	185.82
Chesaco Settlement Fund	\$ 599,808.83	173.25	-	-	600,101.08
Technical Commission Trust	\$ 12,017.06	3.45	-	-	12,020.51
Certificates of Obligation '05	\$ 2,197.97	0.82	-	-	2,198.79
Local Construction 2006	\$ 3,387,102.01	906.66	-	-	3,388,008.67
Herb's Bond 2007	\$ 4,213,858.51	1,209.50	-	2,920.00	4,212,148.10
Herb's Bond 2008	\$ 7,503,064.84	2,154.00	-	-	7,505,218.79
CRA Services Fee Fund	\$ 398,037.74	110.82	-	20,250.00	377,898.26
Hayes County I & S	\$ 5,882,826.71	828.18	32,105.66	4,889,000.00	815,853.42
All Funds	\$ 34,326,864.52	8,394.14	252,045.20	12,238,768.80	22,360,800.06
CT Funds Management					
	0.1500%				
Description	7/31/08 Balance	Interest	Deposits	Debits	8/31/08 Balance
General	\$ 11,245,248.92	1,653.03	-	-	11,246,901.95
CLASS - MBIA					
	0.3500%	NAV 1.00			
Description	7/31/08 Balance	Interest	Deposits	Debits	8/31/08 Balance
General	\$ 3,734,188.16	1,119.29	-	-	3,735,307.45

LOGIC	0.4059%	1,00043	Debit	Credit	Balance
General	\$ 763,009	171.58			\$ 763,009
Road and Bridge General	\$ 497,751.11	802.15			497,752.89
Medical and Dental Fund	\$ 1,746,766.89	0.46			1,747,366.04
D.A. Drug Forfeiture	\$ 1,384.19				1,384.67
Health Services Grants	\$ 62.26	0.02			62.28
Family Health Services	\$ 36.43	0.01			36.44
Historical Conservation Trust	\$ 20.09	0.01			20.10
Hayes County I & S	\$ 7,197.83	2.48			7,194.31
	\$ 1,926,640.78	804.15			1,927,313.93
ALL Funds	4,179,802.58	1,440.88			4,181,303.46

TREASURY BILLS AND NOTES

TREASURY BILLS AND NOTES									
Description	Price	Yield	Maturity	Balances 7/31/09		Transactions		Balances 8/31/09	
				Par Value	Book Value	Market Value	Purchases	Maturities	Par Value
812798336	99.3489		1/7/10	100,000.00	99,348.76	99,348.84		100,000.00	
			General	100,000.00	99,903.78	99,903.63		100,000.00	
812798398	99.9821		1/6/10	200,000.00	199,984.17	199,978.58			
			General	200,000.00	199,904.17	199,978.25			
812798344	99.808		1/11/10	200,000.00	200,000.00	200,000.00			
			Hayes County I.S.	200,000.00	200,000.00	200,000.00			
812798395	99.982		1/10/10	500,000.00	499,779.35	499,781.35			
			General	500,000.00	499,756.36	499,761.25			
812798392	99.9891		1/12/10				100,000.00		
			General				100,000.00		
				1,050,000.00	1,049,519.72	1,049,853.33	100,000.00	100,000.00	
TOTAL									
				1,050,000.00	1,049,523.97	1,049,853.97			

LINKED DEPOSIT PROGRAM CERTIFICATES OF DEPOSITS

LINKED DEPOSIT PROGRAM CERTIFICATES OF DEPOSITS									
Description	Fund	Yield	Maturity	Balance 7/31/09		Transactions		Balance 8/31/09	
				Pac Value	Book Value	Purchases	Withdrawals	Pac Value	Book Value
Security State Bank	General	2.75%	11/7/09	4,022.27	4,022.27			4,022.27	4,022.27
Security State Bank	General	3.09%	07/4/10	13,666.22	13,666.22			13,666.22	13,666.22
Security State Bank	General	3.14%	07/4/12	21,030.03	21,030.03			21,030.03	21,030.03
Security State Bank	General	2.94%	7/10/10	16,721.09	16,721.09			16,721.09	16,721.09
Security State Bank	General	2.99%	7/10/12	12,626.08	12,626.08			12,626.08	12,626.08
Security State Bank	General	2.98%	1/4/13	9,166.58	9,166.58			9,166.58	9,166.58
Security State Bank	General	2.99%	1/4/13	13,813.14	13,813.14			13,813.14	13,813.14
Security State Bank	General	2.99%	1/4/13	11,230.35	11,230.35			11,230.35	11,230.35
Security State Bank	General	2.99%	1/4/13	14,966.76	14,966.76			14,966.76	14,966.76
Franklin Bank	General	2.64%	08/12	30,461.18	30,461.18	202.83		30,664.01	30,664.01
Franklin Bank	General	1.81%	10/19/11	7,966.15	7,966.15			8,003.17	8,003.17
TOTAL				151,812.84	154,812.84	202.83		155,052.60	155,052.60

TOTAL Fund Balances	55,038,575.14					43,544,203.96
BENCHMARK						
CURRENT 90 DAY TREASURY BILL YIELDING .13%						

Fund balances for 8/31/99

